

## STEPS

### Coachstep Gear Plate and Bolt Replacement

When replacing the gear plate or the gear plate bolt, the Coachstep assembly **MUST** be removed from the coach.

Check the bolt location to determine the condition of the gear plate bolt.

Fig. 1 shows the gear plate bolt securely installed in the threaded column.

From the opposite side of the step, using a hex head wrench or hex head bit in a drill, remove the gear plate bolt.

**NOTE:** The bolt is installed with Loctite and may need a small amount of heat applied to the bolt to free it.

**NOTE:** If the gear plate bolt is installed with a tack weld, see Fig. 2, the tack weld will need to be ground off prior to removing the bolt.

Place a small line of Loctite across the gear plate bolt threads.

Line the gear plate up and install the gear plate bolt.

Place a tack weld on the end of the gear plate bolt and the threaded column, see Fig. 2.

Reinstall Coachstep assembly.

Fig. 1 - No Tack Weld Present

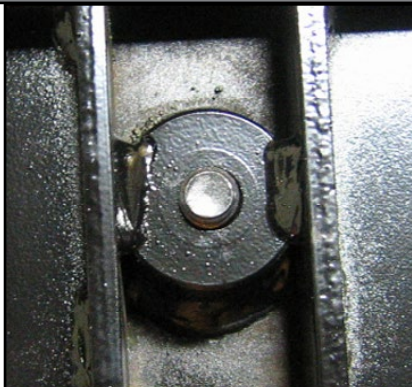
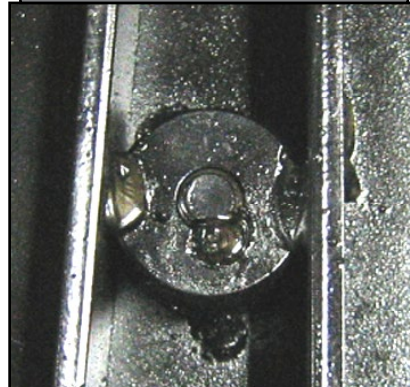


Fig. 2 - Tack Weld Present



## STEPS

### Coachstep Motor Replacement

1. The motor/gear assembly can be replaced by disconnecting the 2-pin connector from the module to the motor.
2. Remove the "p" clamp holding the wire harness to the motor mount.
3. Remove the ball joint linkage from the gear.
4. Remove the self-tapping screw that holds the ground wire.
5. Remove the 3 bolts that hold the motor mount to the step base.
6. Care should be taken not to disturb the adjustment in the length of the ball joint linkage.
7. Install new motor using above steps in reverse order.

**NOTE:** No adjustment is required.

Fig. 3 - 163669 Motor



### Module Replacement

1. Remove the self-tapping screw holding the ground wires.
2. Disconnect the 4-pin connector to the motor home wiring harness.
3. Disconnect the 2-pin connector to the motor.
4. Remove the self tapping screws holding the module in place.
5. Install the new module in the reverse order.

Fig. 4 - 164889 Module



As a supplier of components to the RV industry, safety, education and customer satisfaction are our primary concerns. Should you have any questions, please do not hesitate to contact us at (574) 537-8900 or by email at [customerservice@lci1.com](mailto:customerservice@lci1.com). Self-help tips, technical documents, product videos and a training class schedule are available at [www.lci1.com](http://www.lci1.com) or by downloading the MyLCI app.