

## REWIRING INSTRUCTIONS FROM OLDER REVISION RELAY BOARDS TO CURRENT PRODUCTION REVISION H RELAY BOARD.

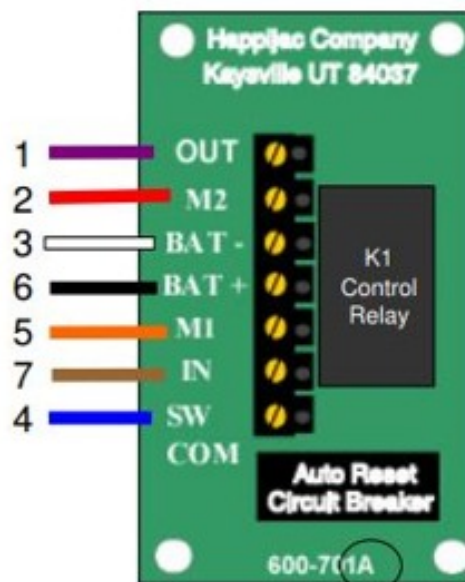
Relay boards with a revision prior to "H" are no longer available and must be replaced with a Rev H board. Although the boards function identically, they wire differently. The illustration below is designed to help in the replacement of an older revision board with the Rev H board. Your old board may say "UP" and "Down" or it may be marked "IN" and "OUT". For purposes of conversion, DOWN = OUT and UP = IN.

Make a chart of your wire colors and number them according to your current board revision shown below. Board revisions are printed on the circuit board.

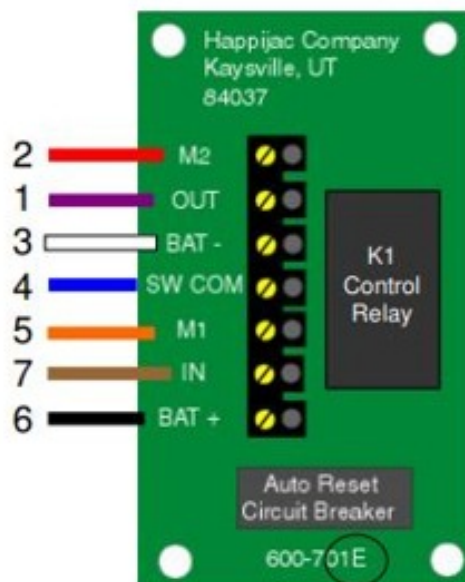
It is also helpful to tag each wire with a 1 thru 7, tagged to correspond with the wire numbers shown for your old revision board being replaced. IE: If you are replacing a Rev E thru Rev G board. Your wires would be numbered in order from top to bottom (2,1,3,4,5,7,6)

As you move the wires (one at a time) from the old revision board to the Rev H board insert the wires into the correct numbered position and tighten. When completed your wire tags should read 1 thru 7 from top to bottom as shown. (1,2,3,4,5,6,7)

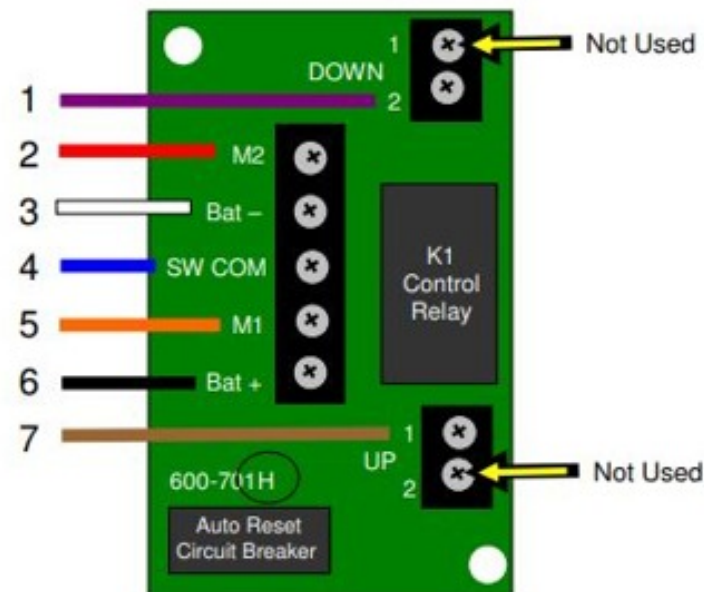
The Rev H boards are also marked with the same terminal markings as the older revision boards with the exception of the UP/DOWN vs IN/OUT markings.



Rev A – D



Rev E-G



Rev H