



**FLEETWOOD  
TRAVEL TRAILER  
SLIDEOUT SYSTEM  
OWNER'S  
MANUAL**

82-S0150-01 REV. 1  
April, 2002

# **TABLE OF CONTENTS**

	<b><u>PAGE #</u></b>
<b><u>OPERATIONS MANUAL</u></b> .....	1
1. SYSTEM DESCRIPTION .....	1
1.1 MAJOR COMPONENTS .....	1
2. HOW TO OPERATE YOUR SLIDEOUT SYSTEM .....	1
2.1 WARNING .....	1
2.2 EXTENDING THE ROOM .....	2
2.3 RETRACTING THE ROOM .....	2
3. MANUALLY OVERRIDING YOUR SLIDEOUT SYSTEM .....	2-5
4. PREVENTATIVE MAINTENANCE .....	6
3. TROUBLESHOOTING THE SLIDEOUT SYSTEM .....	7
<b><u>WARRANTY</u></b> .....	8

# **OPERATIONS MANUAL**

The Power Gear electric slideout system in your unit is designed to give you years of trouble free operation and reflects the latest state of the art technology. **READ, STUDY, AND UNDERSTAND THIS MANUAL BEFORE OPERATING THIS SLIDEOUT SYSTEM.**

## **1. SYSTEM DESCRIPTION**

Your Power Gear Slideout System is a rack and pinion design operated by a 12 Volt DC electric motor.

### **1.1 MAJOR COMPONENTS**

- Inner rail assemblies are designed to support the room weight.
- The 12 Volt DC gearmotor will operate the room using power from the on-board unit battery.
- Slideout systems are equipped with an electric motor, which can be released to allow you to extend / retract the room in the event of a loss of power, by applying force directly on the drive shaft cross tube.
- A specially designed control that gives the user full control of room movement, in or out. The control has a load sensing capability that stops the motor when the room is fully extended or retracted.

## **2. HOW TO OPERATE YOUR SLIDEOUT SYSTEM**

### **2.1 WARNING**

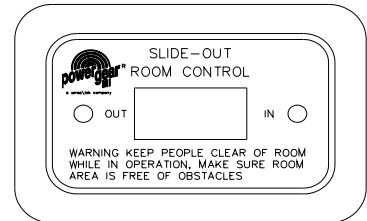
- **ALWAYS MAKE SURE THAT THE SLIDEOUT ROOM PATH IS CLEAR OF PEOPLE AND OBJECTS BEFORE AND DURING OPERATION OF THE SLIDEOUT ROOM.**
- **ALWAYS KEEP AWAY FROM THE SLIDE RAILS WHEN THE ROOM IS BEING OPERATED. THE GEAR ASSEMBLY MAY PINCH OR CATCH ON LOOSE CLOTHING CAUSING PERSONAL INJURY.**
- **ALWAYS INSTALL TRANSIT BARS ON THE SLIDEOUT ROOM DURING STORAGE AND TRANSPORTATION.**

**FAILURE TO FOLLOW THESE INSTRUCTIONS COULD  
RESULT IN SERIOUS INJURY OR DEATH.**

## **2.2 EXTENDING THE ROOM**

1. Level the unit.
2. Verify the battery is fully charged and hooked-up to the electrical system.
3. Remove the transit bars.
4. Press and hold the IN/OUT switch (Fig. 1) in the OUT position until the room is fully extended and stops moving.
5. Release the switch, which will lock the room into position. **NOTE:** If the slideout switch is held after the room is fully extended, the control will sense that the room has stopped and will shut off the motor after a few seconds.

**Fig. 1** Slideout Switch



## **2.3 RETRACTING THE ROOM**

1. Verify the battery is fully charged and hooked-up to the electrical system.
2. Press and hold the IN/OUT switch (Fig. 1) in the IN position until the room is fully retracted and stops moving.
3. Release the switch, which will lock the room into position. **NOTE:** If the slideout switch is held after the room is fully retracted, the control will sense that the room has stopped and will shut off the motor after a few seconds.
4. Install the transit bars.

## **3. MANUALLY OVERRIDING YOUR SLIDEOUT SYSTEM**

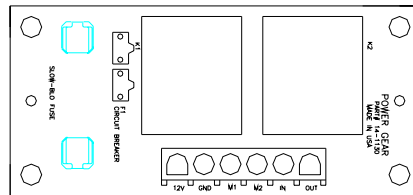
Your Power Gear slideout system is equipped with an electric motor, which can be released to allow you to extend / retract the room in the event of a loss of power, by applying force directly on the drive shaft cross tube.

**NOTE:** If the room does not move when the switch is pressed, check the following:

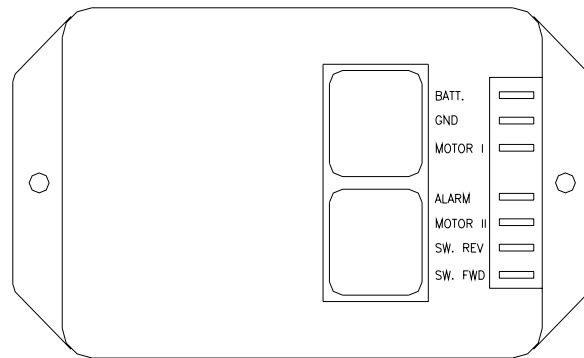
- **Battery is fully charged and connected.**
- **The transit bars are removed.**

After the previous items have been checked and the room still does not move when the slideout switch is pressed, follow these simple steps to manually override your slideout room.

1. Locate the slideout relay control (refer to your dealer or RV manufacturer for location). Unplug the wiring harness from the controller. Locate the slideout motor (Fig. 4). It will be mounted to one of the slideout rails. **NOTE:** If the RV has an underbelly or a cover over the motor, these parts must be removed to access the motor.
2. Rotate the brake lever, on the backside of the motor, counter-clockwise (looking from the rear of the motor) about 1/8 of a turn to the released position. Refer to Fig. 3. This will release the brake that holds the room in place.
3. The room is now free to move. Using an adjustable wrench on the drive shaft cross tube, crank the room in completely.
4. When the room is fully in apply pressure to the wrench/ratchet and return the brake lever to its engaged position. This will ensure the room is locked into a sealed position.
5. Take the unit to an authorized dealer for service.



RELAY CONTROL



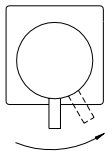
CURRENT LIMITER

**Fig. 2** Slideout Control

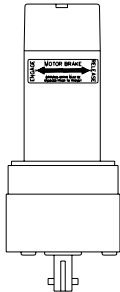
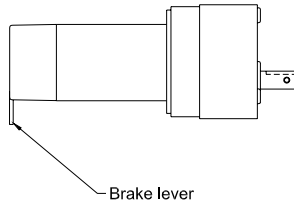
# !!! WARNING !!!

**WHEN THE MOTOR BRAKE IS DISENGAGED THE SLIDEOUT ROOM WILL NOT LOCK INTO PLACE; THEREFORE, THE ROOM WILL NOT BE SEALED. WHEN THE ROOM HAS BEEN MANUALLY RETRACTED, BE SURE TO INSTALL THE TRANSIT BARS AND RETURN THE MOTOR BRAKE LEVER TO ITS NORMAL ENGAGED POSITION IN ORDER TO SEAL AND LOCK THE ROOM INTO POSITION.**

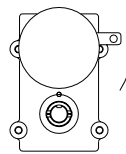
END DRIVE MOTOR



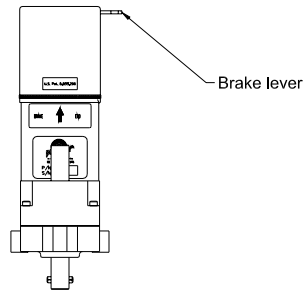
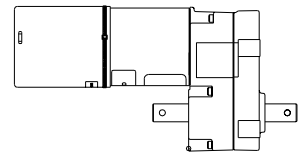
Rotate approx. 30 degrees counter-clockwise to release motor brake



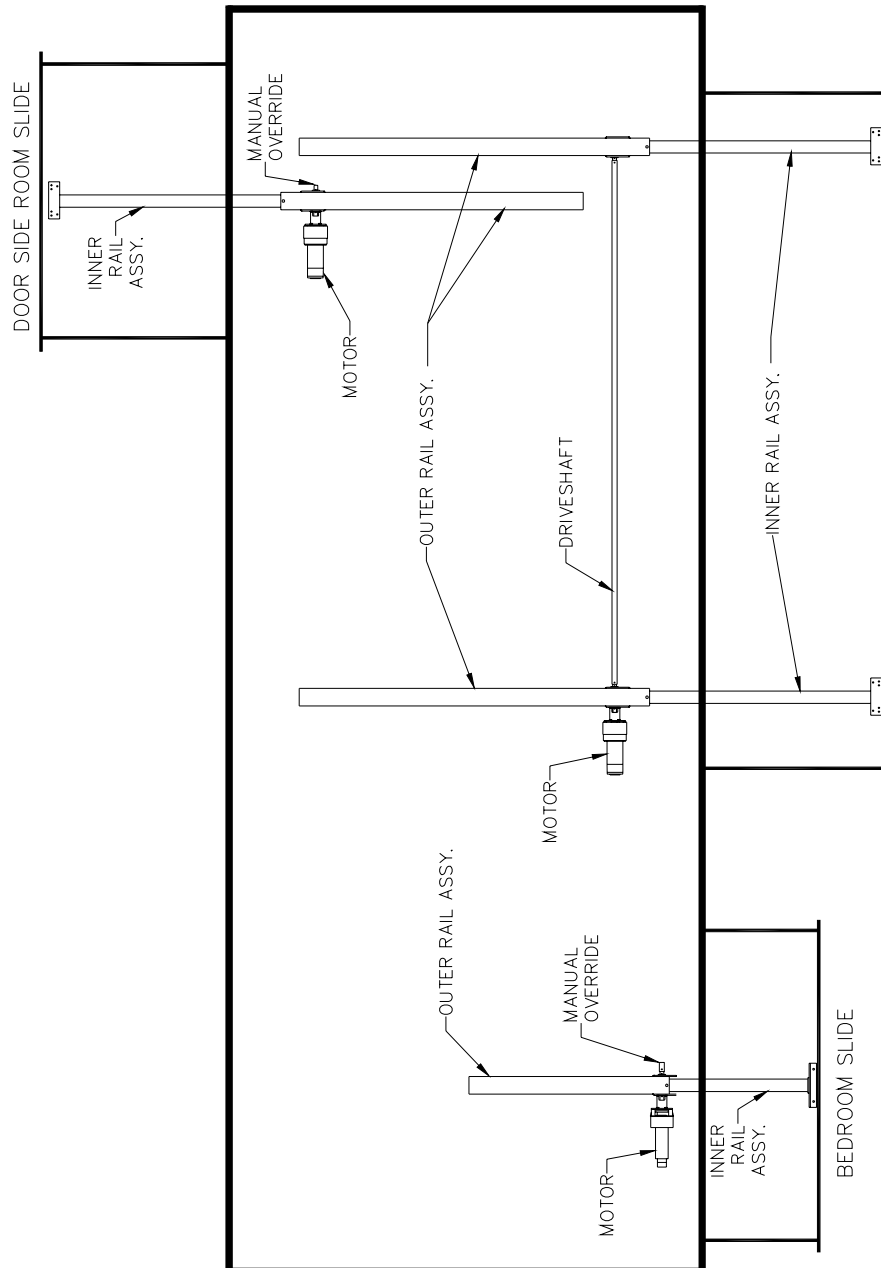
CENTER DRIVE MOTOR



Rotate approx. 30 degrees counter-clockwise to release motor brake



**Fig. 3** Motor Brake Lever



**Fig. 4** Motor and Manual Override General Locations

**4. PREVENTATIVE MAINTENANCE**

Your Power Gear slideout system has been designed to require very little maintenance. To ensure the long life of your slideout system read and follow these few simple procedures.

**CAUTION: DO NOT WORK ON YOUR SLIDEOUT SYSTEM UNLESS THE BATTERY IS DISCONNECTED.**

- When the room is out, visually inspect the inner slide rail assemblies. Refer to Fig. 4 for location of inner rail assemblies. Check for excess build-up of dirt or other foreign material; remove any debris that may be present.
- If the system squeaks or makes any noises it is permissible to apply a coat of light weight oil to the drive shaft and roller areas but, remove any excess oil so dirt and debris do not build-up. **DO NOT** use grease.

**IF YOU HAVE ANY PROBLEMS OR QUESTIONS CONSULT YOUR LOCAL AUTHORIZED DEALER OR CALL US AT POWER GEAR (800-334-4712).**



## 5. TROUBLESHOOTING THE SLIDEOUT SYSTEM

If a problem occurs with a Power Gear Slideout System Consult the following table. If a problem is not listed or you require further assistance, please call Power Gear and talk to our Customer Service Department at 1-800-334-4712.

Problem	Check/Inspect	Probable Cause	Solution
The room does <b>NOT</b> move and the motor does <b>NOT</b> turn.	The room will move slightly then stop.	Excessive drag on the room.	Check to insure the transit bars are removed.
The room does <b>NOT</b> seal.	Check for motor brake lever in 'engaged' position.	Motor brake lever disengaged.	Engage brake lever. Refer to Fig. 3
The room <b>STARTS</b> to move but then <b>STOPS</b> .	Test by visual inspection.	An obstruction blocking path of travel of the room.	Remove obstruction or relocate the unit.
The room moves <b>VERY</b> slowly.		Debris lodged between the gear and rack.	Remove the debris.
		Dirt or corrosion build-up.	Remove dirt and lubricate with <b>LIGHT</b> coat of oil.
		The room moves slowly all the way in or out.	Check for 12 Volts DC at the motor while room is in operation.

## POWER GEAR LIMITED WARRANTY

Power Gear warrants to the original retail purchaser that the product will be free from defects in material and workmanship for a period of two (2) year following the retail sales date. Power Gear will, at its option, repair or replace only parts covered by this limited warranty which, following examination by Power Gear or its authorized distributors or dealers, is found to be defective under normal use and service. No claims under this warranty will be valid unless Power Gear or its authorized distributor or dealer is notified in writing of such claim prior to the expiration of the warranty period. Warranty is non-transferable.

### **THIS WARRANTY SHALL NOT APPLY TO:**

- Failure due to normal wear and tear, accident, misuse, abuse, or negligence.
- Products which are modified or altered in a manner not authorized by Power Gear in writing.
- Failure due to misapplication of product.
- Telephone, telegraph, teletype or other communication expenses.
- Living or travel expenses of person performing service.
- Overtime labor.
- Failures created by improper installation of the product's slideout system or slideout room to include final adjustments made at the plant for proper room extension/retraction; sealing interface between slideout rooms and side walls; synchronization of inner rails; or improper wiring or ground problems.
- Failures created by improper installation of leveling systems, including final adjustments made at the plant, or low fluid level, wiring or ground problems.
- Replacement of normal maintenance items including lubricants and fuses.

There is no other express warranty other than the foregoing warranty. THERE ARE NO IMPLIED WARRANTIES OF MERCHANTABILITY OR FITNESS FOR A PARTICULAR PURPOSE. IN NO EVENT SHALL POWER GEAR BE LIABLE FOR ANY INCIDENTAL OR CONSEQUENTIAL DAMAGES. This warranty gives you specific legal rights, and you may also have other rights which vary from state to state. Some states do not allow the limitations of implied warranties, or the exclusion of incidental or consequential damages, so the above limitations and exclusions may not apply to you.

For service contact your nearest Power Gear authorized warranty service facility or call 1-800-334-4712. Warranty service can be performed only by a Power Gear authorized service facility. This warranty will not apply to service at any other facility. At the time of requesting warranty service, evidence of original purchase date and unit serial number must be presented.

**Power Gear  
1217 East 7<sup>th</sup> Street  
Mishawaka, IN 46545**

**800/334-4712**