



SOLAR MONITOR SM25000

INSTRUCTION MANUAL

English

The Sunsei™ SM25000 is an easy-to-use Solar Monitor for measuring your Solar Panel Current and your Battery Voltage. It works for systems that are equipped with the Sunsei Charge Controller CC25000. Thanks to its long connecting wire, you can mount it where you want and keep track of your systems status.

PRODUCT FEATURES AND OPERATION

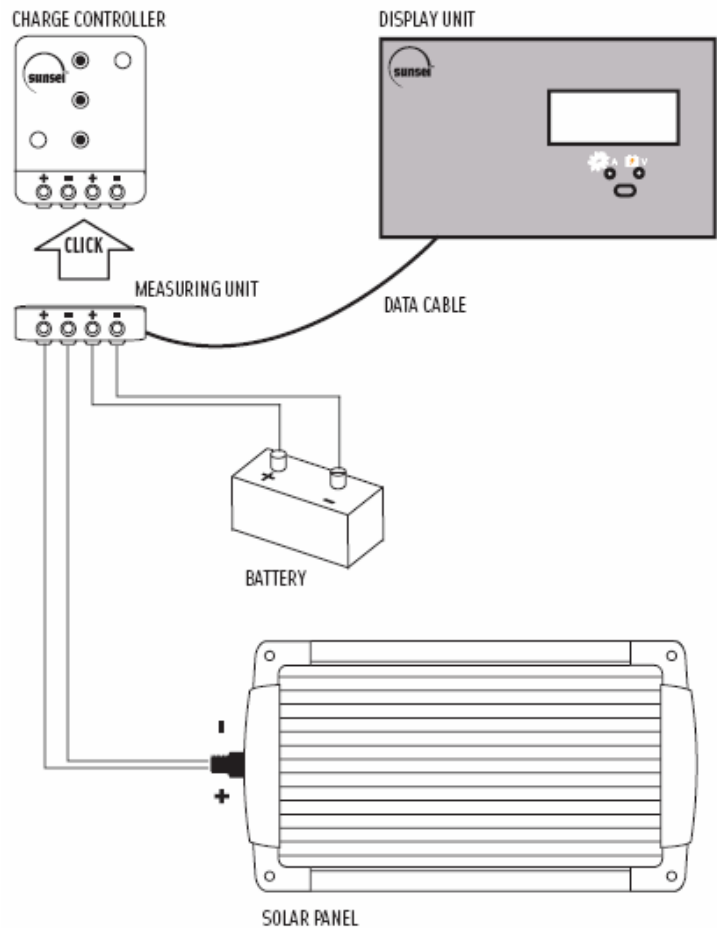
- > To monitor your batteries and solar panel.
- > With an easy one-button operation you can switch between reading your battery voltage and reading your solar panel amperage.
- > 2 LED's to show which value is being displayed by LCD.
- > Plug'n'play for quick and easy installation.

COMPONENTS

The SM25000 contains 3 parts, the display unit (mirror design), the measuring unit (blue) and the data cable. The measuring unit measures the solar panel current and the battery voltage; it shall be mounted directly on the charge controller CC25000. The display unit shows the measured values on the 3-digit LCD display; it is intended to be mounted in an easy, accessible and visible place.

IMPORTANT INFORMATION

- > For usage with the charge controller CC25000 only. Please refer to the manual of the charge controller for the installation and safety instructions. Note: if the charge controller CC25000 is already installed, first disconnect it from the solar panels and batteries. Always CONNECT the BATTERY FIRST, and DISCONNECT the BATTERY LAST.
- > Do not exceed the unit's voltage and current ratings.
- > The Solar Monitor SHOULD NOT BE USED in direct sunlight or temperatures exceeding 122°F (50°C) or below -13°F (-25°C). For indoor use only.
- > Electricity, even low voltage electricity, can be dangerous. Installation should be performed by qualified personnel only. The requirements of National Electrical Codes should be followed.
- > Follow all safety precautions of the battery manufacturer. Proper ventilation must be provided for the batteries. Most batteries produce hydrogen gas, which is extremely explosive. DO NOT expose the battery to open flame, matches, cigarettes or sparks.



WARRANTY

ICP Solar Technologies grants the original purchaser of the Sunsei™ SM25000 a **2-year** warranty against any defects of materials or workmanship. This warranty does not cover installation or cost derived thereof. ICP shall not be responsible for any costs due to removal, shipment, re-installation or any other loss due to warranty servicing. The maximum liability to ICP under this warranty shall not exceed the purchase price of this controller. This warranty does not cover a controller that has been damaged by misuse, neglect or improper installation. ICP shall not be responsible for any damage to persons or property caused by improper installation, misuse or improper handling of this product. Some states do not allow exclusion or limitation of accidental or consequential losses, so the exclusions may not apply to the purchase. This warranty gives you specific legal rights and you may have other rights, which vary from one state (or province) to another. Please note that ICP will not accept returns without prior authorization. The original proof of purchase is required for warranty validation.

PARAMETERS	Sunsei™ SM25000
Voltage range	0 - 35 V
Current range	0 - 25 A
Dimensions display unit W x H x D	5.5" x 3.1" x 0.9" 140 x 80 x 24 mm
Dimensions measuring unit W x H x D	3.3" x 1.7" x 1.25" 84 x 44 X 32 mm
Cable length	19'8" 6 m
Operating temperature	- 13°F to + 122°F - 25°C to + 50°C
Case protection	IP 22

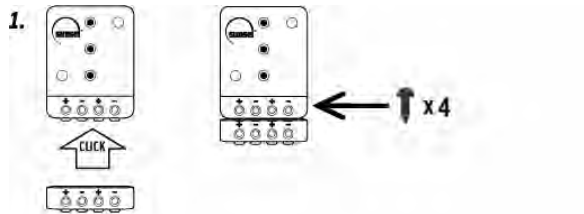
Register your warranty online: www.icpsolar.com/warranty

Need help?
www.sunseisolar.com
+1.888.427.7652

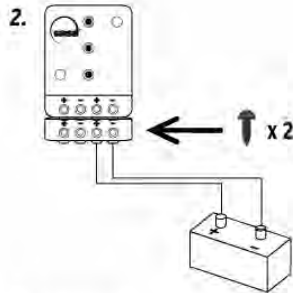


ICP Solar Technologies
Montreal, Canada

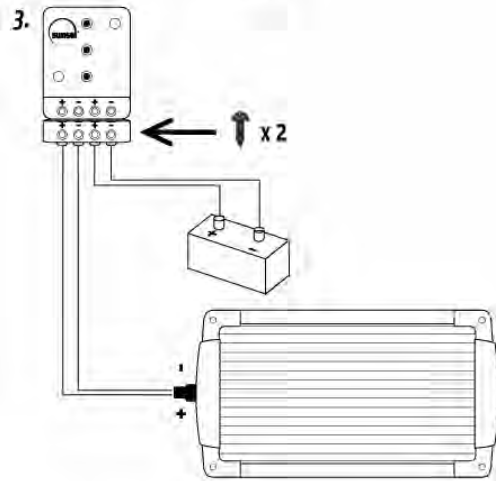
INSTALLATION PROCEDURE



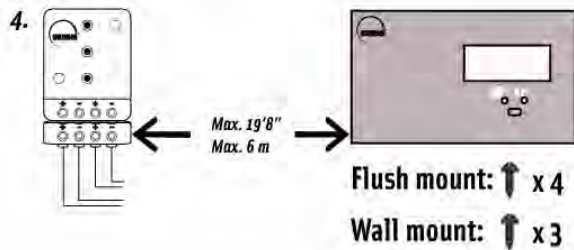
- > **Step 1 Mounting the measuring unit** - Open the terminal screws of the charge controller and click the measuring unit on it, then tighten all four terminal screws.



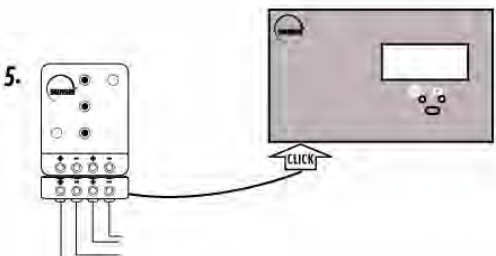
- > **Step 2 Connecting the batteries** - Connect the battery cables to the terminals of the measuring unit. Make sure to respect polarity (connect + to + and - to -). Then tighten the 2 terminal screws.



- > **Step 3 Connecting the solar panels** - Connect the solar panel cables to the terminals of the measuring unit, Make sure to respect polarity (connect + to + and - to -). Then tighten the 2 terminal screws.



- > **Step 4 Mounting the display unit** - Select an easy accessible and visible place for the display unit within the cable limits (19'8" cable length between measuring module and cable module). Mount the display either with the provided back cover for wall mounting or without the back cover for flush mounting.



- > **Step 5 Connecting the data cable** - Use the provided data cable to connect the measuring unit with the display unit.

Register your warranty online: www.icpsolar.com/warranty