



Gas Valve Kit 3108705.272 Replacement Instructions for Dometic Refrigerators with Weber Gas Valve

For Refrigerator Models:

RM663, RM763, RM1303
RM3500, RM3600, RM3800
RM2602, RM2603, RM2802, RM2803, RM3501,
RM3601, RM3604, RM3801, RM3804, RM4801,
RM4804.2, RM4804.3, RM4804.002, RM4804.004,
RM4804.005, RM4804.006

This Kit Includes:

(1)	2932615012	Gas Valve/Solenoid
(1)	3106375.015	Circuit Board
(1)	2931826016	Thermocouple
(1)	3108705.298	Bracket, Gas Valve
(1)	3107685.038	Installation Instructions

INSTALLATION INSTRUCTIONS

All field wiring modification should be made in compliance with the 1990 ANSI/NFPA N.E.C. and 1987 ANSI A119.2 for Recreational Vehicles.

⚠ WARNING

Shut off LP gas at supply source. Failure to follow these instructions could create a fire or explosion causing death or severe personal injury.

⚠ WARNING

Turn off 115 volt AC. Failure to follow these instructions could create a shock hazard causing death or severe personal injury.

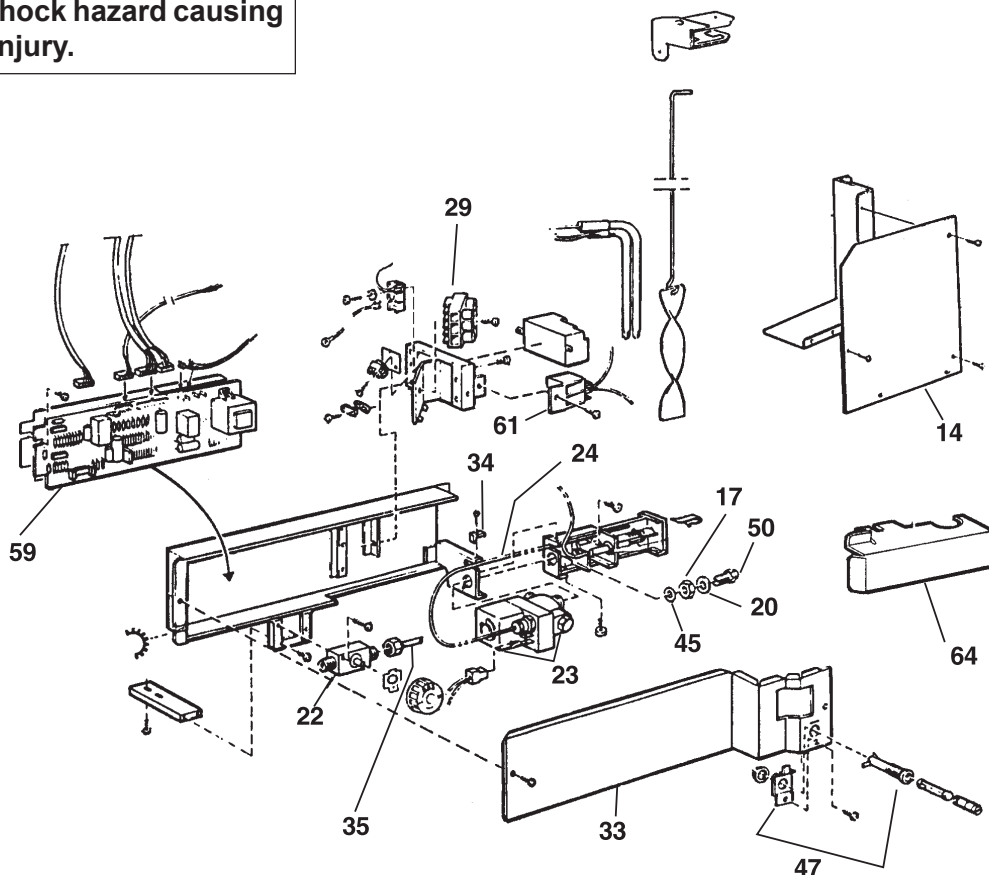
⚠ WARNING

These instructions must be read and understood before installation is performed. Improper modification of this appliance can be extremely hazardous causing personal injury or property damage. This Kit must be installed by a qualified service person.

1. Turn refrigerator selector switch to the "OFF" position.
2. Disconnect 12 Volt DC at the refrigerator terminal block. (See Fig.1, Item 29)

FIG. 1

NOTE: For models RM663, RM763, and RM1303, a few parts are different than shown in FIG. 1.



REVISION

Form No. 3107685.038 10/00
(Replaces 3107685.020)
©2000 The Dometic Corporation,
LaGrange, IN 46761

3. Remove protection plate and burner cover. (See Fig. 1, Items 14 and 64)
4. Remove gas line from manual gas shut off valve to gas solenoid valve. (See Fig. 1, Item 35)
5. Remove thermocouple retainer and thermocouple. (See Fig. 1, Items 34 and 24)
6. Remove manual gas valve, gas solenoid valve (Disconnect wire lead to solenoid), burner jet, washers and nut. (See Fig 1, Items 22, 23, 50, 45, 20 and 17)
7. Remove Electrical box cover. (See Fig.1, Item 33.)
8. Disconnect fuse leads and relay on 3-Way models. (See Fig.1, Items 47 and 61)
9. Disconnect all leads on circuit board and remove board. (See Fig. 1, Item 59).
10. Install new circuit board using the same screws. Refer to FIG. 2 when connecting wire leads to the circuit board.

IMPORTANT: This circuit board is universal. Not all terminals will be used for each model. It is very important to use the proper connections. Use FIG.2 to determine wire connections for your model. If your model does not appear, DO NOT install this circuit board.

Connect the yellow wire of thermocouple to the yellow wire of the circuit board. Press firmly to insure a tight connection. Connect the black wire of the thermocouple to the black wire of the circuit board.

11. Attach new gas solenoid valve to burner housing by using the same burner jet, washers and hex nut that were removed earlier. (See Fig. 3)
12. Install new gas valve mounting bracket to existing bracket used to mount manual valve. (See Fig. 4)
13. Lead for new gas solenoid valve is permanently attached to the new circuit board. The molded plug end attaches to the new gas solenoid valve.
NOTE: For models RM663, RM763, and RM1303 skip Steps 14, 15, 16 and 18.

FIG. 4

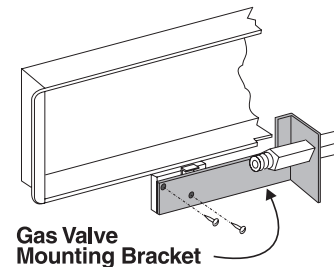


FIG. 2

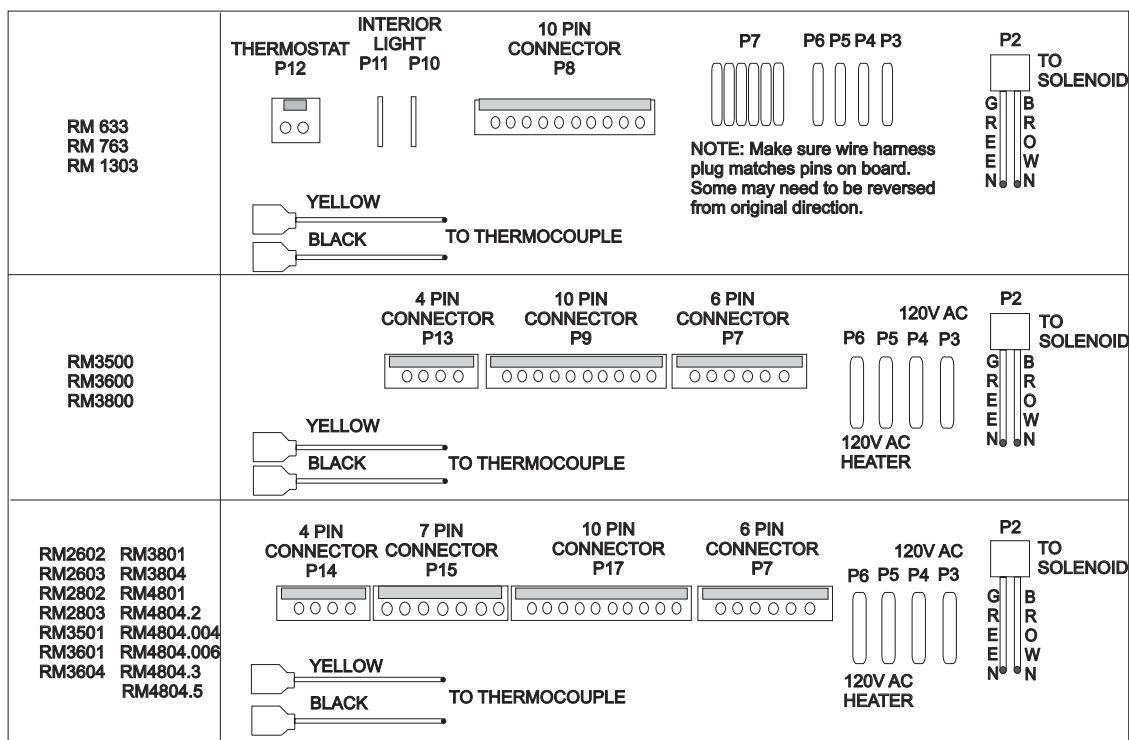
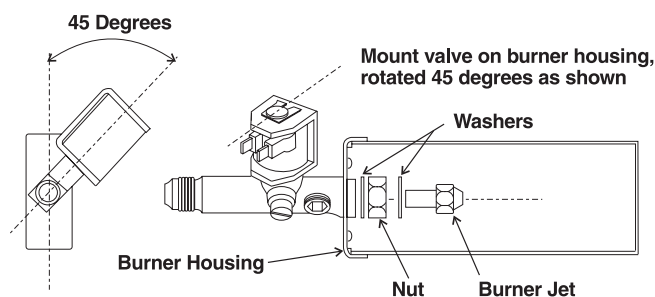


FIG. 3



14. Modify the electrical box cover as shown in Fig. 5.
15. Modify the mounting plate as shown in Fig. 6.
16. Reinstall modified electrical box cover.
17. On 3-Way models, install 12 Volt DC relay as shown in Fig. 7.
18. Reinstall protection plate. It may be necessary to cut a hole in the protection plate to clear the gas solenoid valve. (See Fig. 8)
19. Reconnect LP gas, 12 Volt DC and 120 Volt AC supply lines.

IMPORTANT: Check all LP gas lines for possible leaks with an electronic LP gas leak detector or an approved LP gas liquid solution.

IMPORTANT: The electronic operation of the new circuit board will perform the same as the previous one with one exception. On the previous board, if for some reason the burner did not light on the first cycle attempt the red check light would come on indicating flame failure. On the new board the burner will attempt to light several times before the check-light comes on. This may take up to thirty-five minutes with the built-in delays between each ignition cycle.

⚠ WARNING

Failure to test for and correct gas leaks could create a fire or explosion causing death or severe personal injury.

FIG. 5

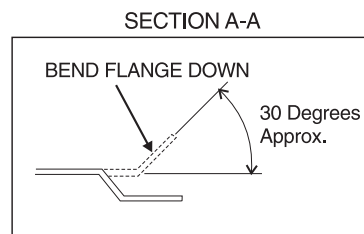
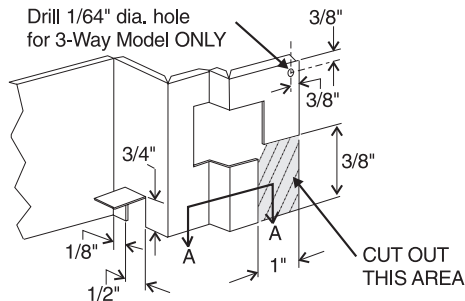


FIG. 6

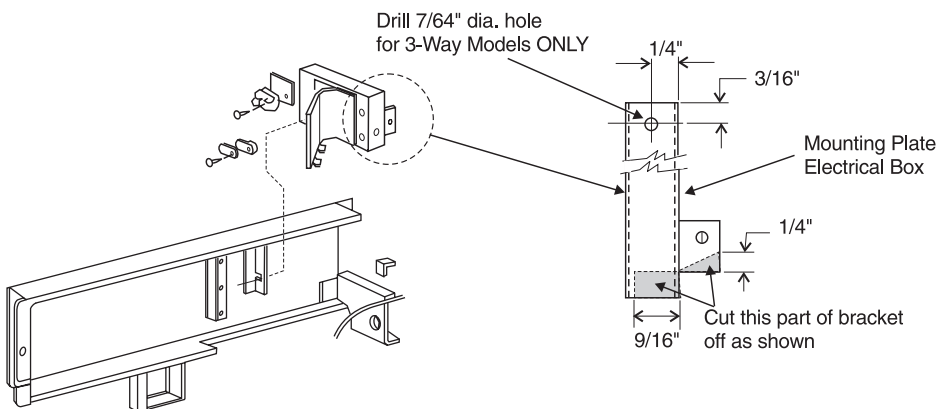


FIG. 7

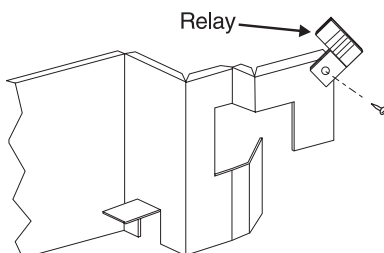


FIG. 8

