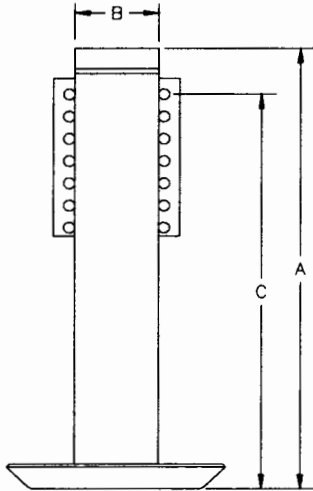


# LEG IDENTIFICATION INFORMATION

## INTERNAL SPRING JACKS



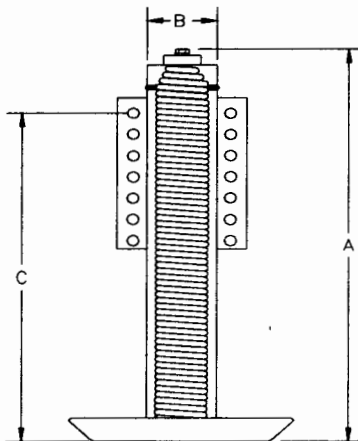
A = 22 5/16" B = 3 5/8" - 12000 LB. LEG PART # - 500385TH

A = 22 5/16" B = 4" - 16000 LB. LEG PART # - 500145

A = 22 3/8" B = 4 1/2" - 24000 LB. LEG PART # - 500386T

A = 22 3/8" B = 4 1/2" - 24000 LB. LEG PART # - 500620  
WIDER MOUNTING BRACKET WIDTH = 7 1/4"

## EXTERNAL SPRING JACKS



A = 18" B = 2 5/8" - 6000 LB. LEG PART # - 500482H  
12" STROKE

A = 18" B = 2 5/8" - 6000 LB. LEG PART # - 500600  
**OBSOLETE - USE 500482H**

A = 21 5/16" B = 2 5/8" - 6000 LB. LEG PART # - 500384H  
14" STROKE

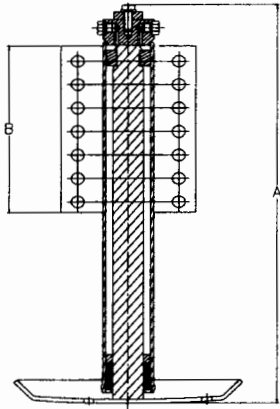
A = 21 5/16" B = 2 5/8" - 6000 LB. LEG PART # - 500598  
**OBSOLETE - USE 500384H**

A = 18" B = 3 1/4" - 9000 LB. LEG PART # - 500498

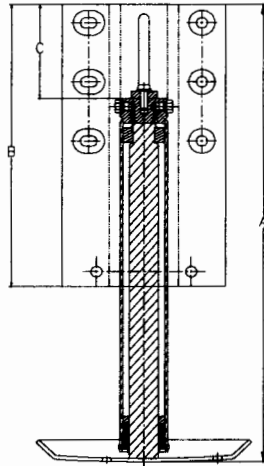
A = 18 5/16" B = 3 1/4" - 9000 LB. LEG PART # - 500235H  
12" STROKE

A = 20 3/4" B = 3 1/4" - 9000 LB. LEG PART # - 500146  
15" STROKE

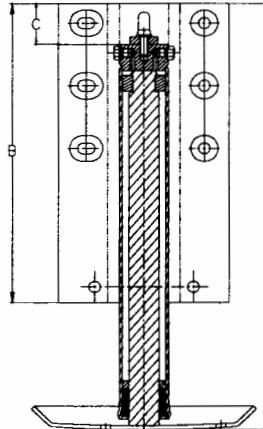
A = 20 3/4" B = 3 1/4" - 9000 LB. LEG PART # - 500272  
FLAT SHOE - **OBSOLETE - USE 500146**



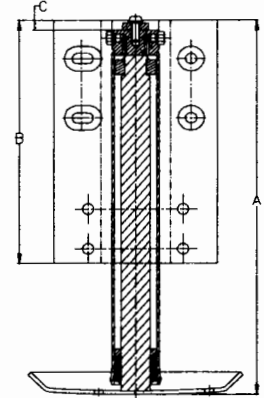
500730



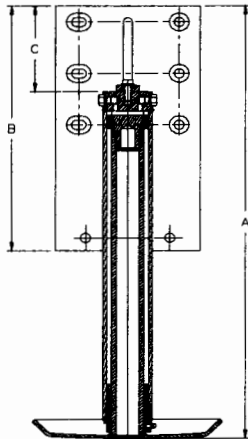
500832



500842

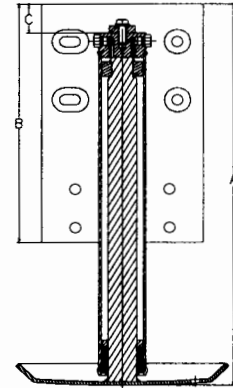


500876

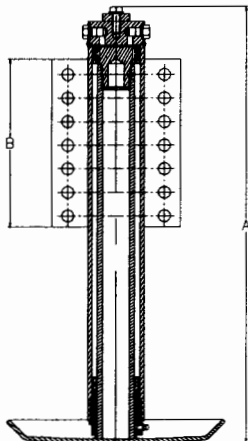


500932

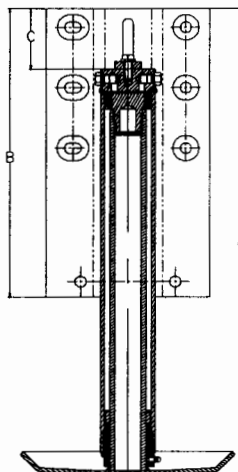
6000 LB. POWER LEVEL LEGS			
PART #	A	B	C
500730	19.146"	8.000"	
500832	23.22"	8.000"	
500842	20.400"	14.313"	2.500"
500876	18.94"	12.313"	.500"
500933	19.72"	12.313"	1.500"
9000 LB. POWER LEVEL LEGS			
PART #	A	B	C
500759	20.846"	8.000"	
500833	23.140"	14.313"	3.000"
500843	21.141"	14.313"	1.000"
500932	25.31"	14.313"	5.000"



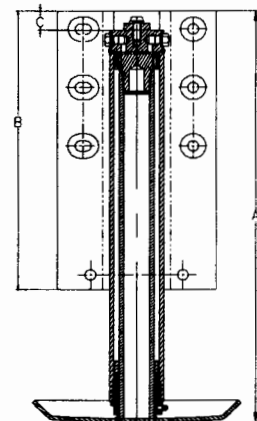
500933



500759



500833



500843