



SUBURBAN MANUFACTURING COMPANY
Post Office Box 399
Dayton, Tennessee 37321

OWNER'S INFORMATION MANUAL

For Model

P-30S

This book contains instructions covering the operation and maintenance of your furnace. Keep with unit at all times.

Should you require further information, contact your dealer or nearest Suburban Service Center.

FOR YOUR SAFETY

IF YOU SMELL GAS:

1. OPEN ALL WINDOWS.
2. DON'T TOUCH ANY ELECTRICAL SWITCHES.
3. EXTINGUISH ANY OPEN FLAMES.
4. IMMEDIATELY CALL YOUR GAS SUPPLIER.

FOR YOUR SAFETY

DO NOT STORE OR USE GASOLINE OR OTHER FLAMMABLE VAPORS AND LIQUIDS IN THE VICINITY OF THIS OR ANY OTHER APPLIANCE.

Listed below are several safety related items that you should follow to assure continued safe operation of the furnace.

1. Keep the furnace area clear of any combustible materials, gasoline or other flammable vapors and liquids.
2. Before operating the furnace, check the location of the furnace vent to make sure it will not be blocked by the opening of any door on the trailer. If it can be blocked, do not operate the furnace with the door open.
3. Do not restrict the flow of combustion air or the warm air circulation to the furnace. To do so could cause personal injury and/or death.
4. Never operate the furnace if you smell gas.
5. Immediately shut furnace down and call a service agency if furnace cycles erratically or delays on ignition.

WARNING! Should overheating occur or the gas supply fail to shut off, shut off the manual gas valve to the appliance before shutting off the electrical supply.

6. Always follow the lighting instructions. Do not deviate from the step-by-step procedures.
7. Never attempt to repair damaged parts. Always have them replaced by a qualified service agency.
8. Never attempt to repair the furnace yourself. Seek the help of a qualified service person.
9. Periodically observe the main burner flame to assure it is burning with a hard blue flame with well defined burner ports (see Figure 3). If flame appears yellow or burner has a lazy flame, shut furnace down and contact a qualified service person.

NOTE: To observe flame, cabinet front must be removed. Operation of burner can then be observed through the viewing window on front of chamber (see Figure 2).

10. Periodically inspect the vent on the outside decorative back for obstructions or the presence of soot. If soot is present, immediately shut the furnace down and contact your dealer or a qualified service person. Do not operate the furnace if soot is present on vent. To do so could result in personal injury and/or death.
11. Never restrict the ducting installed by your trailer manufacturer. To do so could cause improper furnace operation.
12. Do not install air boosters in the duct system. Such devices will cause the furnace to cycle on limit and erratic sail switch operation.

OPERATING INSTRUCTIONS

1. Turn the manual valve to the "OFF" position (see Figure 1).

2. Move "OFF" lever located at the bottom of thermostat to the right if set on "OFF" position.
3. Set thermostat above room temperature to begin blower operation. A slight delay will occur before the blower comes on. Allow blower to run for 5 minutes for combustion chamber purge cycle.
4. After 5 minutes, move thermostat lever below room temperature. Blower should go off.
5. Open manual shut-off valve. Correct operating characteristics depend on this valve being positioned fully open. Never attempt to operate with valve partially closed.
6. Set thermostat lever above room temperature.
7. Allow 30 seconds for main burner to light after blower comes on.
8. If burner does not light, repeat steps 1 through 5.
9. If after 3 attempts with no ignition, go to shutdown and contact your dealer or a local recreational vehicle service agency. Do not continue to cycle furnace through thermostat in an attempt to get ignition.

TO SHUT DOWN

1. Set thermostat to positive off position.
2. Turn manual shut-off valve to the "OFF" position.

PREVENTIVE MAINTENANCE

Your furnace should be inspected before use at least annually by a qualified service agency. Particular attention should be given to the following items:

1. Inspect combustion chamber for restrictions in exhaust or intake. It is imperative that the flow of intake combustion air and the flow of exhaust gases being expelled to the outside atmosphere not be obstructed. Any soot or loose debris should be blown out using high compression air. (See Figure 3.)
2. Inspect all gaskets. If any gaskets show signs of leakage or deterioration, replace them. Safe operation of the furnace depends on all gaskets being tight.
3. Inspect return air inlet openings to the furnace. Remove any restrictions to assure adequate air flow.
4. Inspect main burner by removing the four (4) screws (A, B, C and D) securing the burner access door to the combustion chamber (see Figure 1). If excessive rust and corrosion are present on burner surface, the burner must be thoroughly cleaned or replaced. The burner may be cleaned using a steel wire brush, then blown clean using high compression air.
5. The motor is permanently lubricated and requires no oiling.

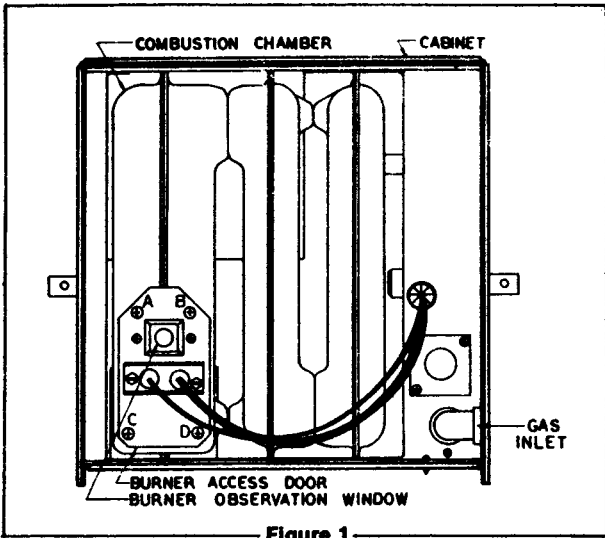


Figure 1

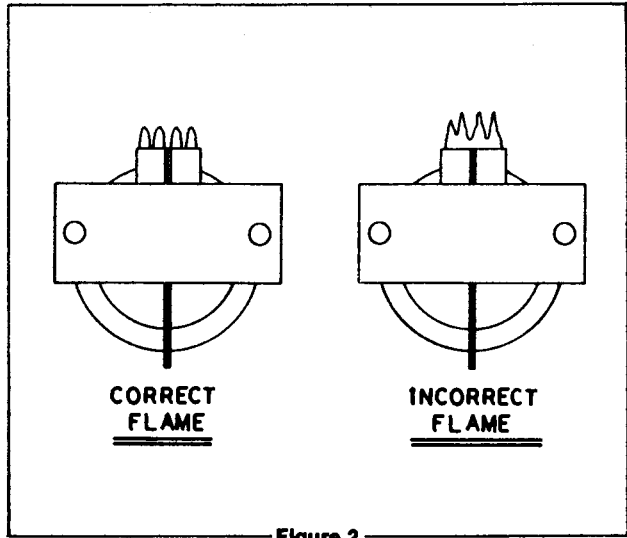
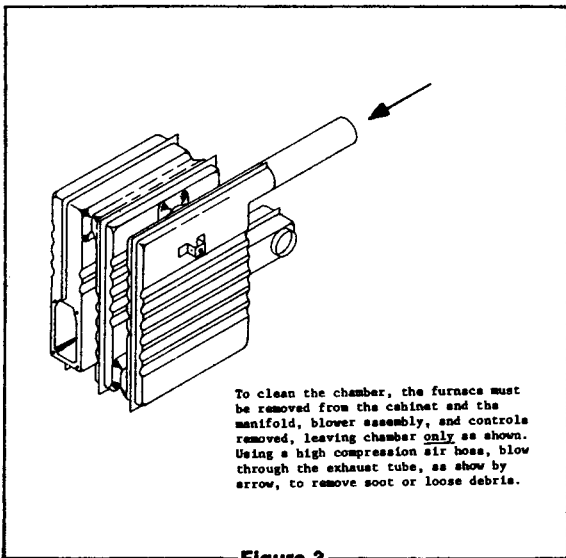


Figure 2



To clean the chamber, the furnace must be removed from the cabinet and the manifold, blower assembly, and controls removed, leaving chamber only as shown. Using a high compression air hose, blow through the exhaust tube, as show by arrow, to remove soot or loose debris.

Figure 3

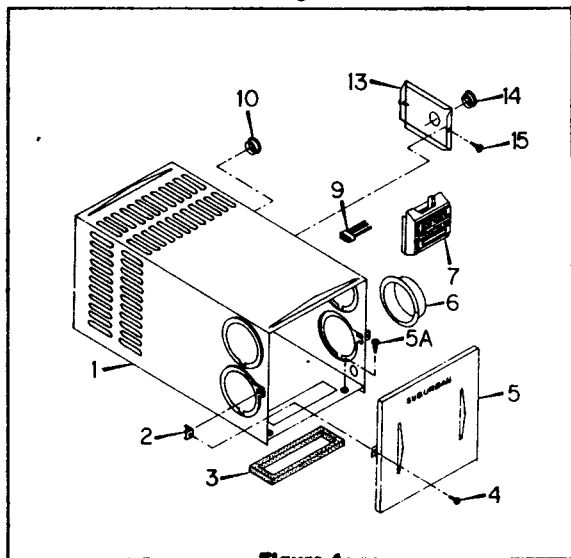
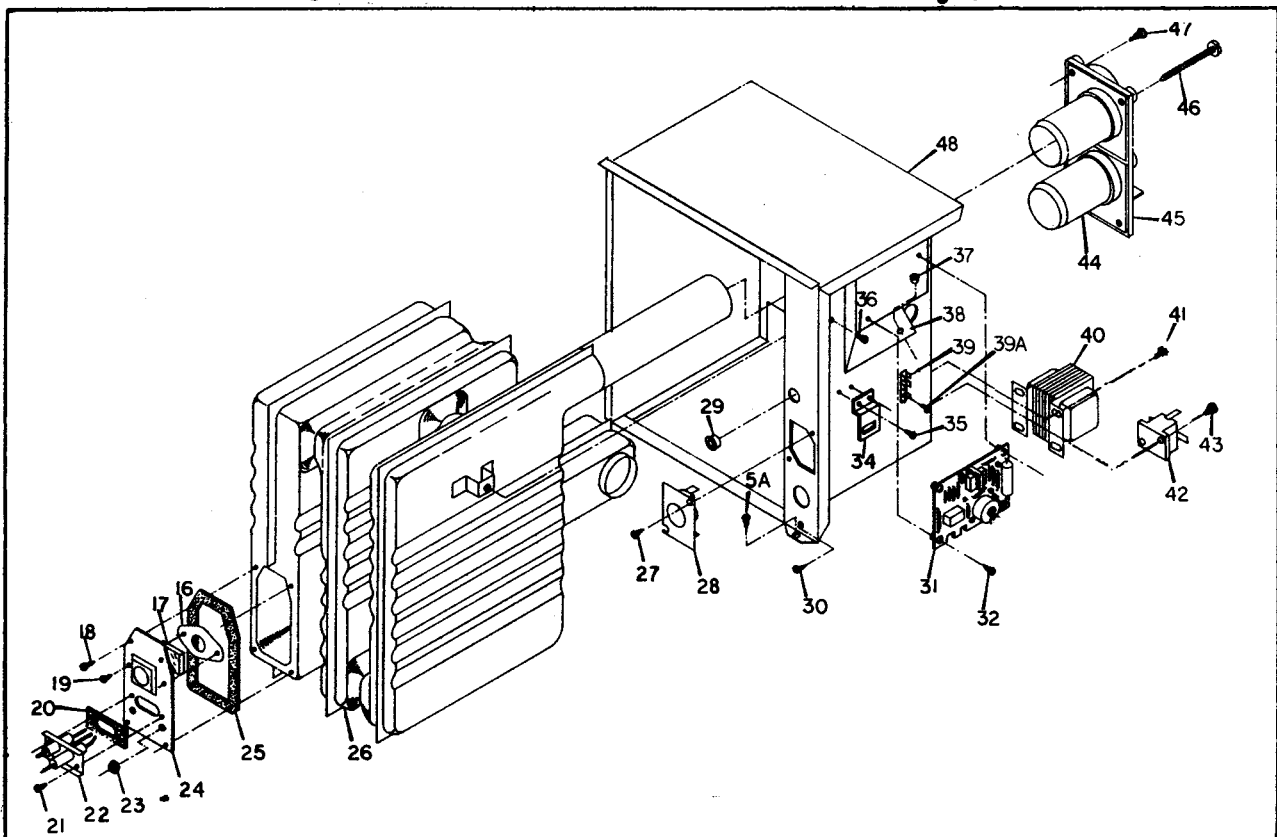


Figure 4



LIMITED WARRANTY

SUBURBAN RECREATIONAL VEHICLE FURNACE

LIMITED ONE YEAR WARRANTY

This Suburban product is warranted to the original purchaser to be free from defects in material and workmanship under normal use and maintenance for a period of one year from date of purchase whether or not actual use begins on that date. It is the responsibility of the consumer/owner to establish the warranty period. Suburban does not use warranty registration cards for its standard warranty. You are required to furnish proof of purchase date through a Bill of Sale or other payment record.

Suburban will replace any parts that are found defective within the first year and will pay a warranty service allowance to the authorized Suburban Service Center at rates mutually agreed upon between Suburban and its authorized service centers. Replacement parts will be shipped freight prepaid within the Continental United States, Alaska and Canada.

For warranty service, the owner/user should contact the nearest authorized Suburban Service Center, advising them of the model and serial numbers (located on the furnace) and the nature of the defect. Transportation of the unit to and from the Service Center and/or travel expenses of the Service Center to your location are the responsibility of the owner/user. A listing of authorized Service Centers is included in the owner's packet supplied with the furnace and a current listing may be obtained from Suburban.

LIMITED FOUR YEAR WARRANTY ON HEAT EXCHANGER

The furnace heat exchanger is further warranted to be free from defects in material and workmanship during the second through fifth year after the date of original purchase. A replacement heat exchanger will be provided under the same conditions as stated in the one year warranty EXCEPT no labor reimbursement will be provided.

LIMITATION OF WARRANTIES

ALL IMPLIED WARRANTIES (INCLUDING IMPLIED WARRANTIES OF MERCHANTABILITY) ARE HEREBY LIMITED IN DURATION TO THE PERIOD FOR WHICH EACH LIMITED WARRANTY IS GIVEN. SOME STATES DO NOT ALLOW LIMITATIONS ON HOW LONG AN IMPLIED WARRANTY LASTS SO THE ABOVE LIMITATIONS MAY NOT APPLY TO YOU. THE EXPRESSED WARRANTIES MADE IN THIS WARRANTY ARE EXCLUSIVE AND MAY NOT BE ALTERED, ENLARGED, OR CHANGED BY ANY DISTRIBUTOR, DEALER OR OTHER PERSON WHOMSOEVER.

SUBURBAN WILL NOT BE RESPONSIBLE FOR:

1. Normal maintenance as outlined in the installation, operating and service instructions owner's manual including cleaning of component parts; such as, orifices and burners.
2. Initial checkouts and subsequent checkouts which indicate the furnace is operating properly.
3. Damage or repairs required as a consequence of faulty or incorrect installation or application not in conformance with Suburban instructions.
4. Failure to start and/or operate due to loose or disconnected wires; water or dirt in controls, fuel lines and gas tanks; restriction or alteration of return air circulation; low voltage.
5. Routine adjustments that may be required to the thermostat, electrode and burner.
6. Costs incurred in gaining access to the furnace.
7. Parts or accessories not supplied by Suburban.
8. Damage or repairs needed as a consequence of any misapplication, abuse, unreasonable use, unauthorized alteration, improper service, improper operation or failure to provide reasonable and necessary maintenance.
9. Suburban products whose serial number has been altered, defaced or removed.
10. Suburban products installed outside the Continental U.S.A., Alaska and Canada.
11. Damage as a result of floods, winds, lightning, accidents, corrosive atmosphere or other conditions beyond the control of Suburban.
12. ANY SPECIAL, INDIRECT OR CONSEQUENTIAL PROPERTY, ECONOMIC OR COMMERCIAL DAMAGE OF ANY NATURE WHATSOEVER. Some states do not allow the exclusion of incidental or consequential damages, so the above limitation may not apply to you.

NO REPRESENTATIVE, DEALER OR OTHER PERSON IS AUTHORIZED TO ASSUME FOR SUBURBAN MANUFACTURING COMPANY ANY ADDITIONAL, DIFFERENT OR OTHER LIABILITY IN CONNECTION WITH THE SALE OF THIS SUBURBAN PRODUCT.

This warranty gives you specific legal rights, and you may also have other rights which vary from state to state.

IF YOU HAVE A PRODUCT PROBLEM

FIRST:

If your RV has its original furnace and is still under the RV manufacturer's warranty, follow the steps described in your RV owner's manual.

SECOND:

Contact a conveniently located authorized Suburban Service Center. A list of such service centers is enclosed with Suburban's Installation, Operating and Service Instructions book. Describe to them the nature of your problem, make an appointment, if necessary, and provide for delivery of the furnace to the selected service center.

THIRD:

Contact: Suburban Manufacturing Company
Customer Service Department
Post Office Box 399
Dayton, Tennessee 37321
Telephone: (615) 775-2131



SUBURBAN MANUFACTURING COMPANY