

Table of Contents

	Page
<i>PowerLevel</i>	
Already Level	2
Panel Communication	2
Park Brake	3
Emergency Retract	4
Zero Mode	5
Out of Level Tolerance	5
Wait	6
Low Voltage	6
Failure Mode	7
<i>Level Best</i>	
Fault Code 1	9
Fault Code 2	10
Fault Code 3	11

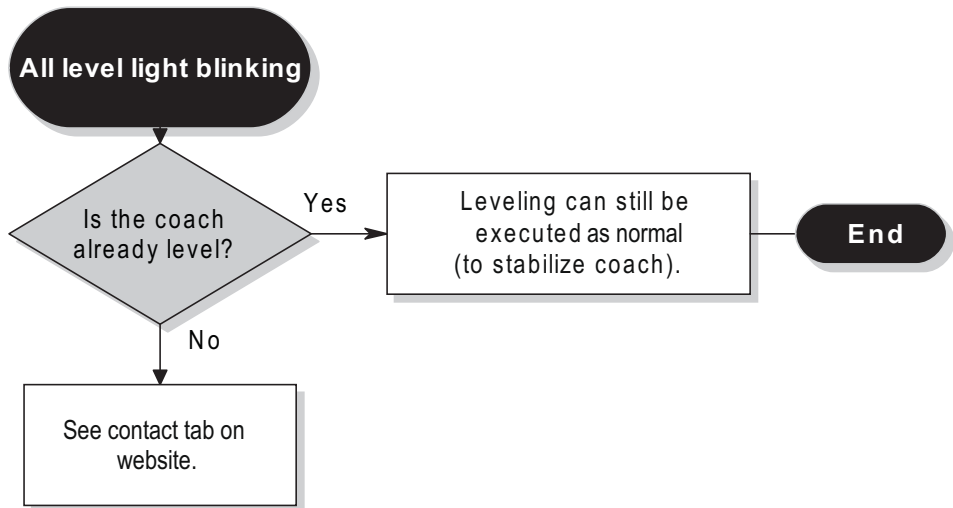
Hydraulic Leveling System Troubleshooting Flowcharts

powergear®
PowerLevel™
▲ s e r i e s ▲
Power DOWN/Spring Return

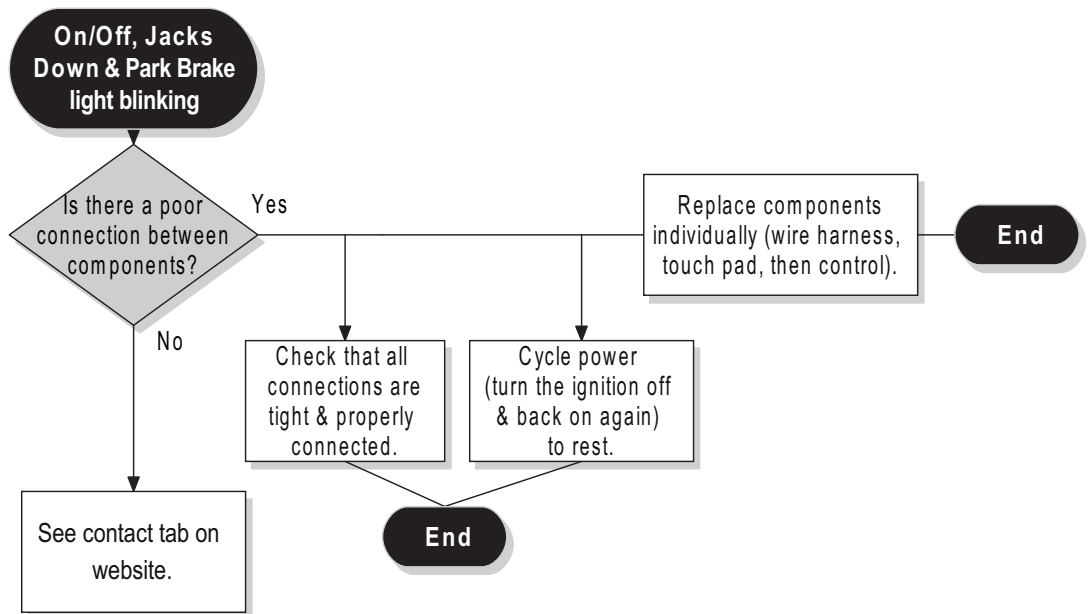
LEVEL
2 0 0 0
2 0 0 1
3 0 0 0
3 0 1 0

Best
Power UP/Power Down

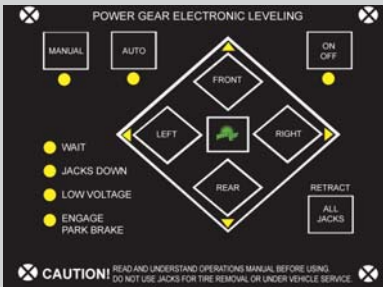
Already Level



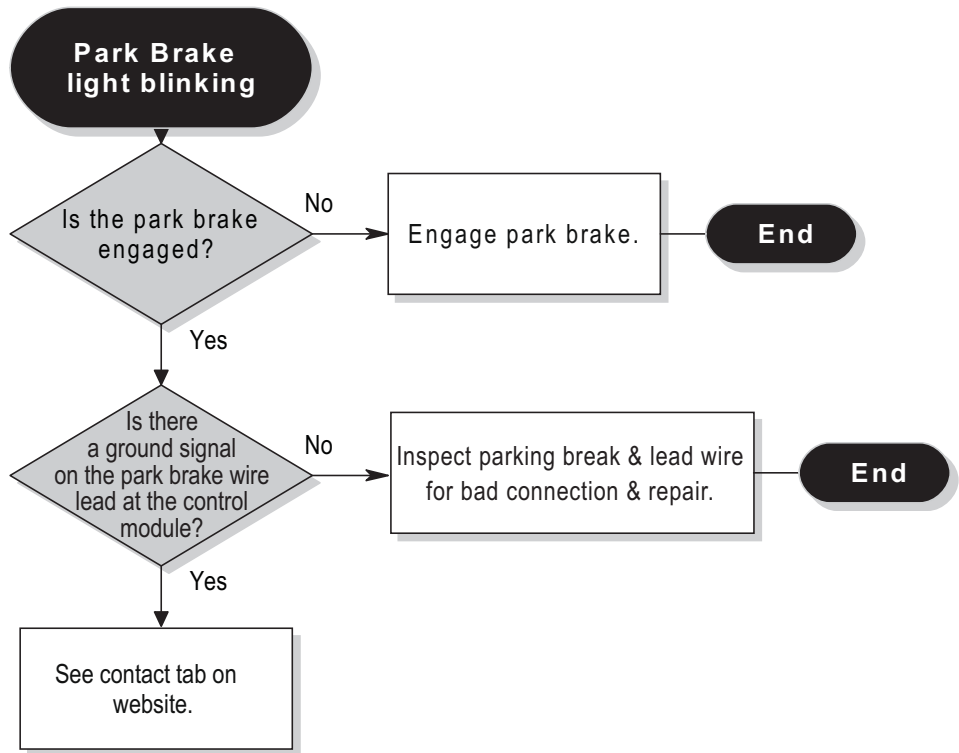
Panel Communication Error



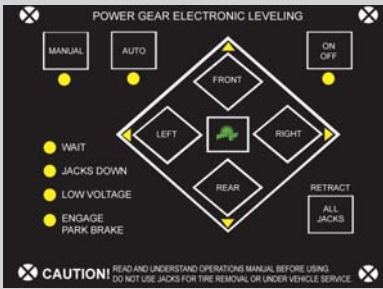
Check www.lci1.com for the latest manual & tip sheet information



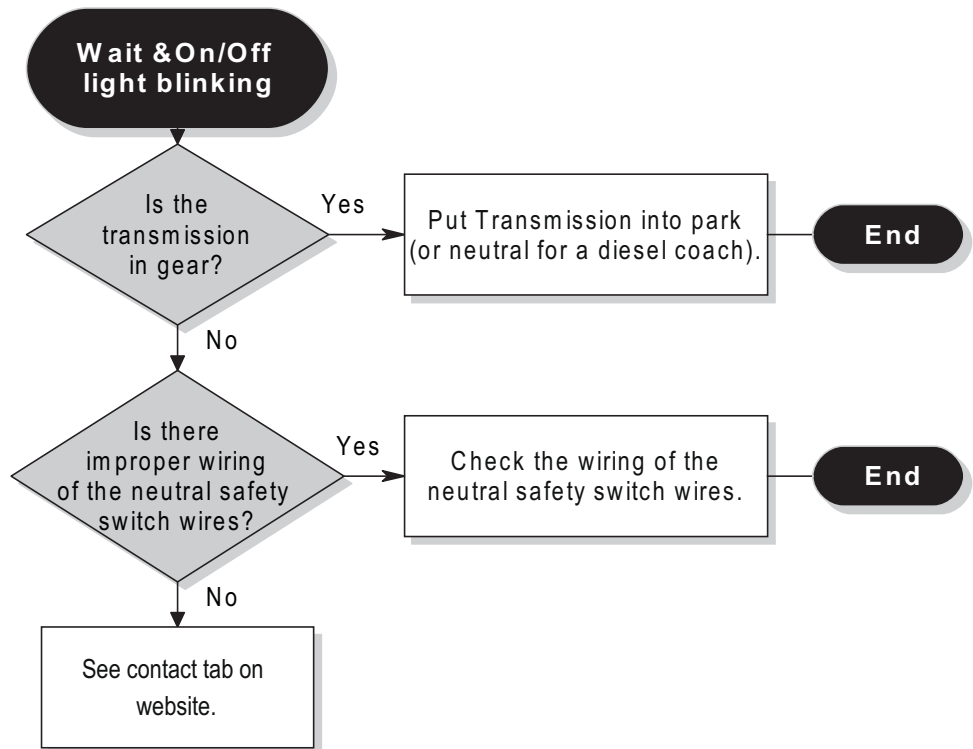
Park Brake



Check www.lci1.com for the latest manual & tip sheet information

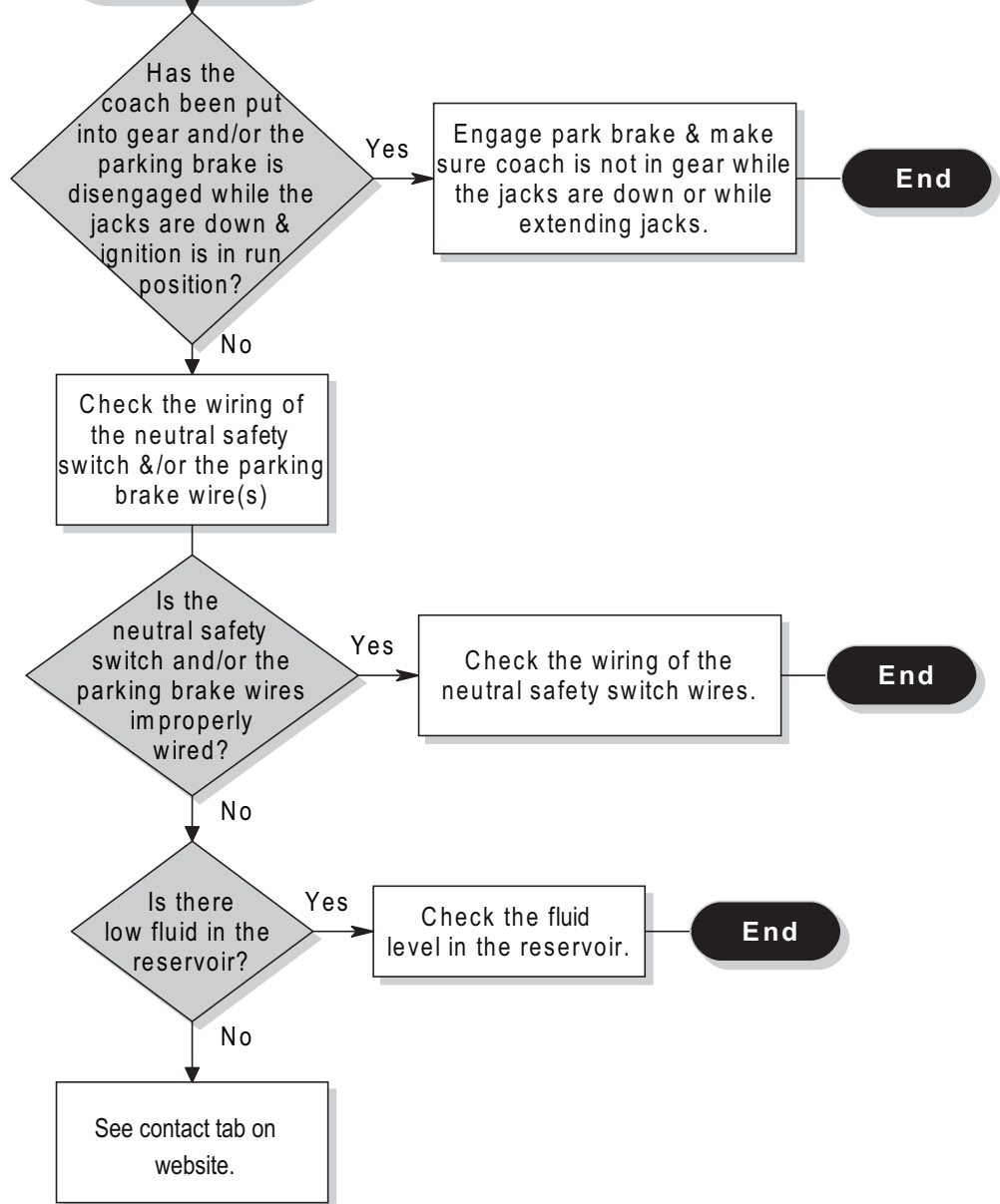


Transmission

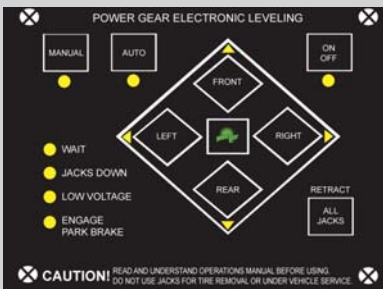


Emergency Retract

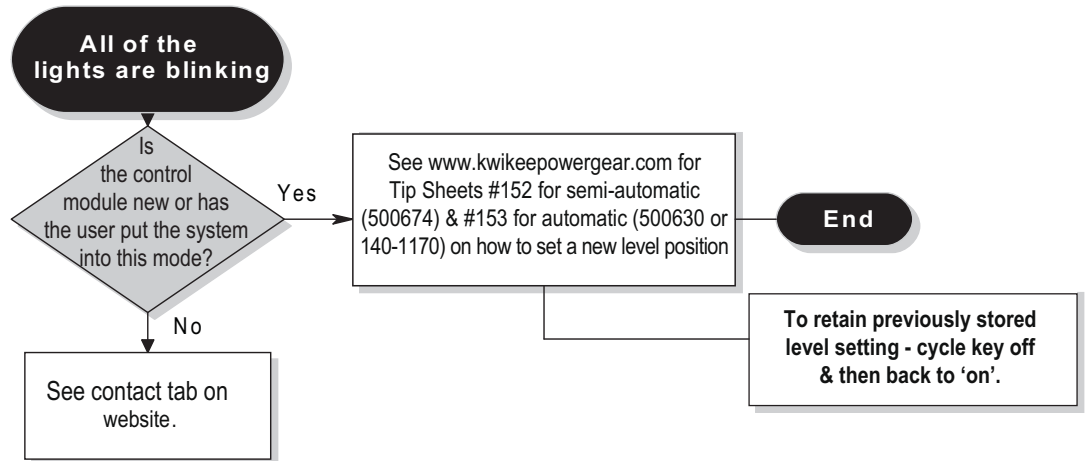
**All lights are blinking
(buzzer is also on &
jacks are retracting)**



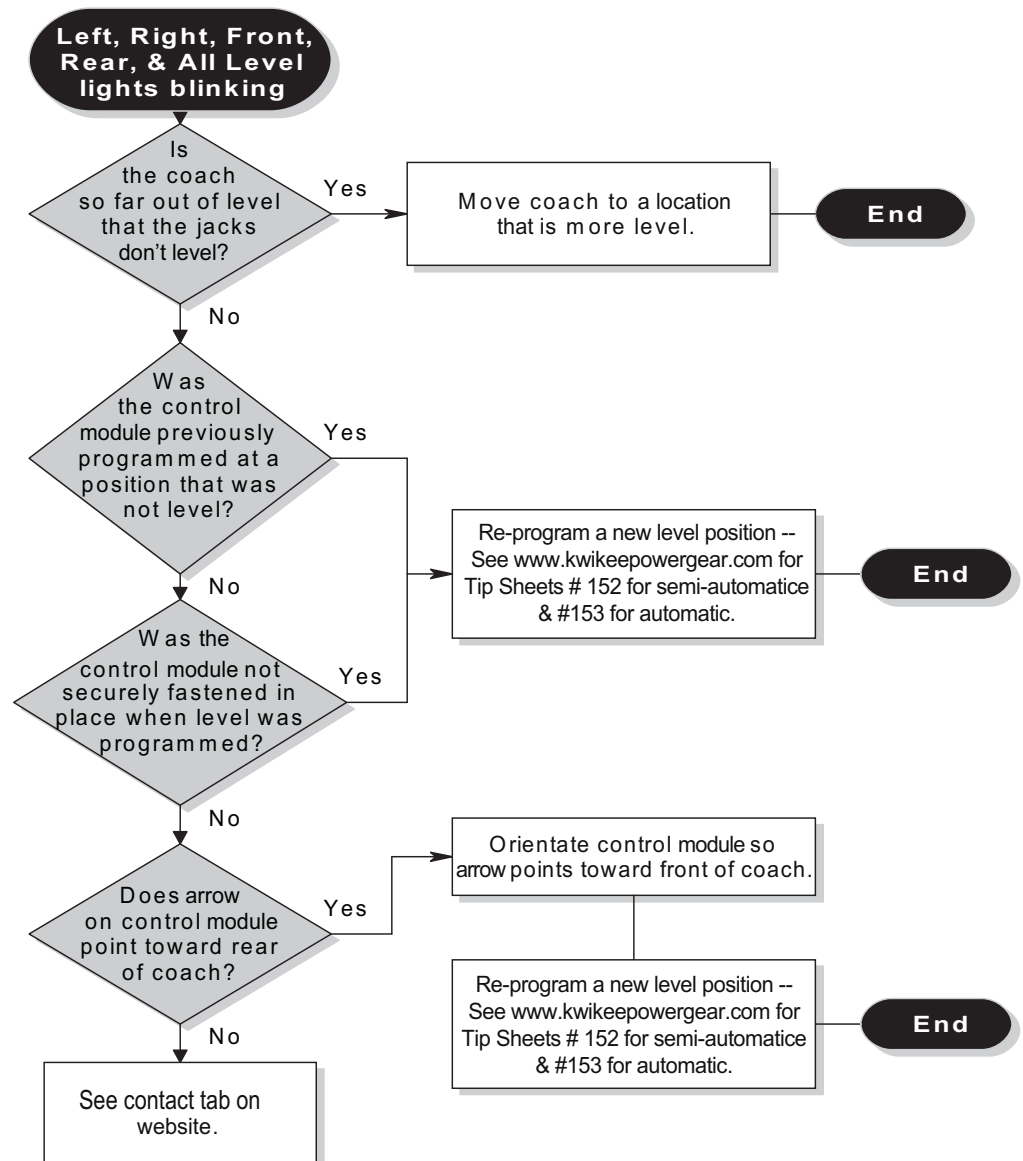
Check
www.lci1.com for the
latest manual & tip sheet
information



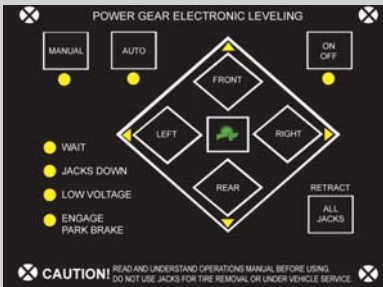
Zero Mode



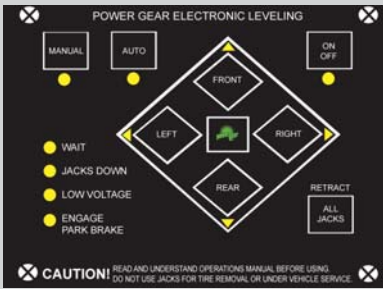
Out of Level Tolerance



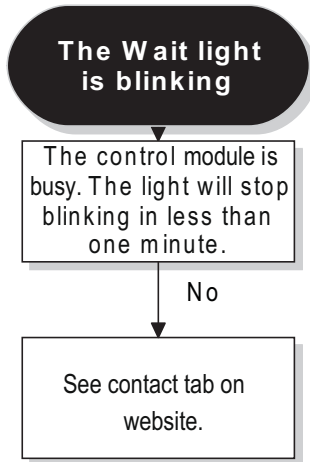
Check www.lci1.com for the latest manual & tip sheet information



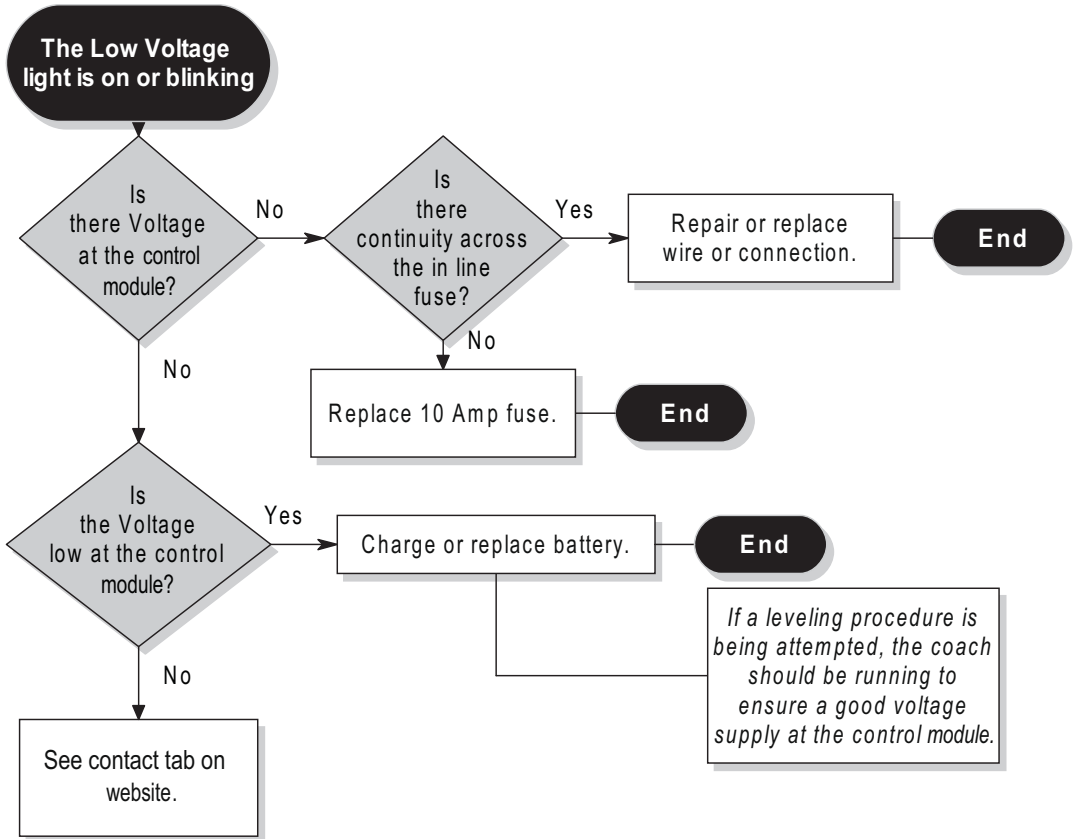
Check
www.lci1.com
 for the latest manual &
 tip sheet information



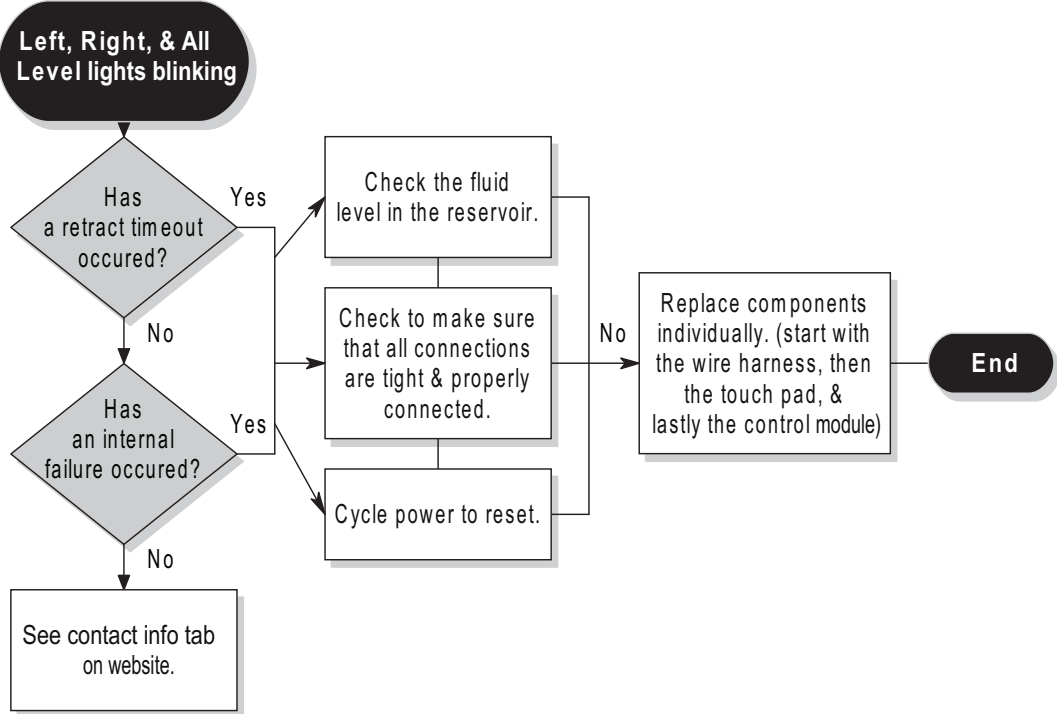
Wait



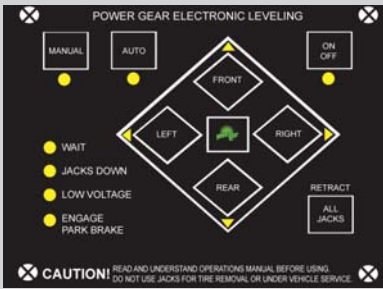
Low Voltage



Failure Mode



Check www.lci1.com for the latest manual & tip sheet information

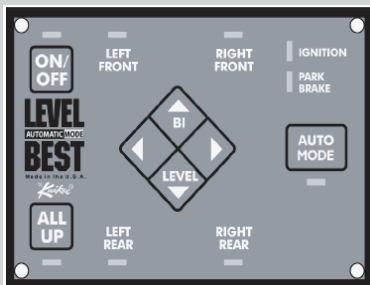


Check
www.lci1.com
for the latest manual &
tip sheet information

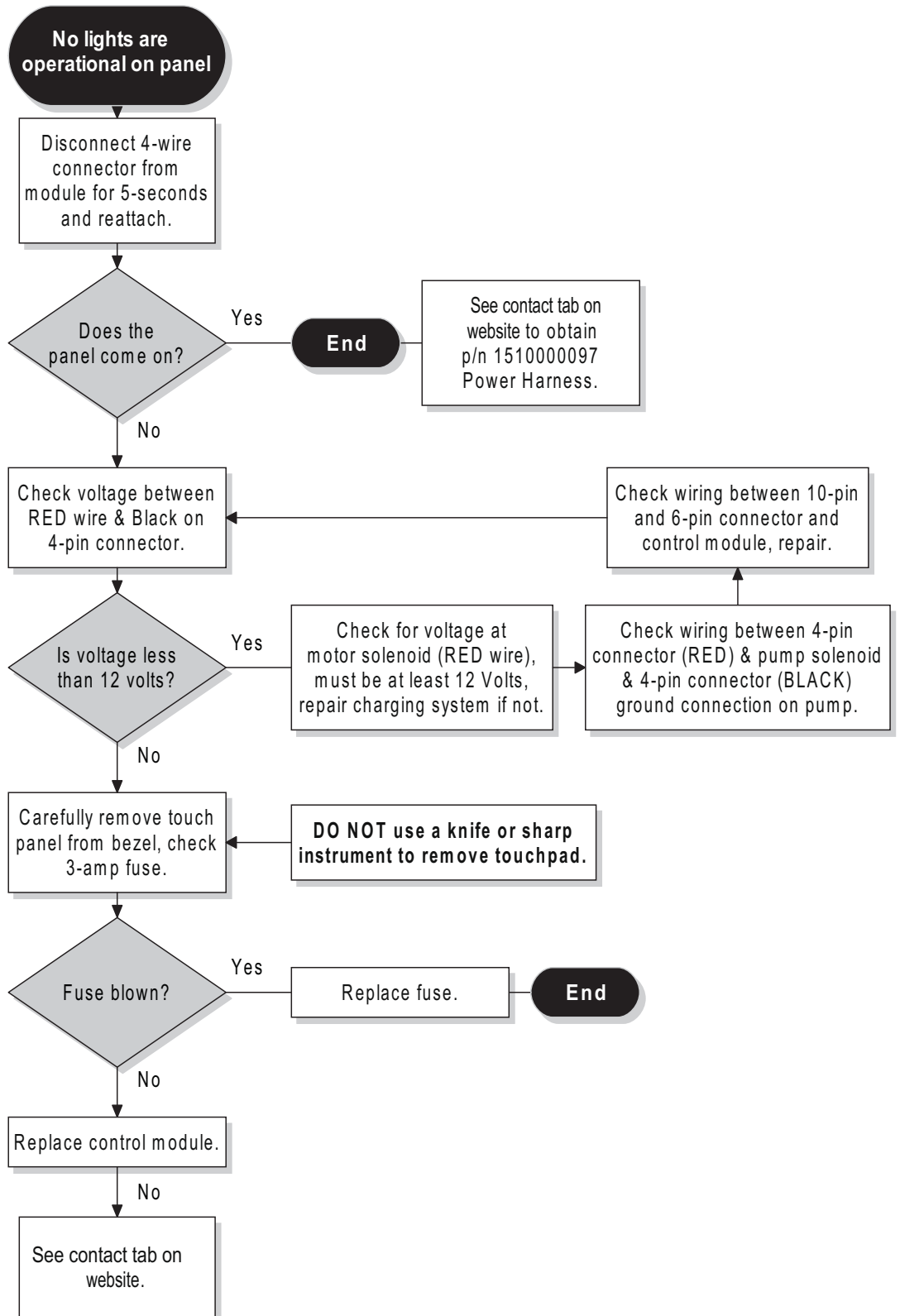
LEVEL Best

2	0	0	0
2	0	1	0
3	0	1	0

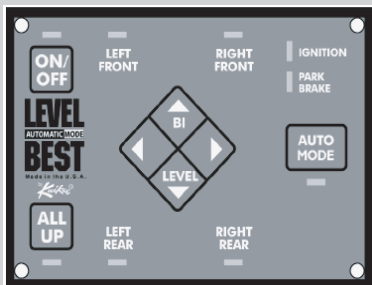
Power UP/Power Down



Fault Code 1



Check www.lci1.com for the latest manual & tip sheet information



Fault Code 2

One Jack leg wont move (all others do)

Disconnect 2-wire connector at jack solenoid controlling jack operation.

Using voltmeter between WHITE & GREY wire connector, have assistant depress button on touch pad to operate jack in question.

Check battery changing system for 12+ VDC, repair.

Check wiring between 10-pin and 6-pin connector and control module, repair.

Is reading less than 12 volts?

Check WHITE wire from connector to 10-pin or 6-pin connector, repair.

Check GREY wire from connector to motor solenoid, repair.

Using Ohmmeter, take reading between terminals of leg solenoid.

Reading not between 8.5-10 ohms?

Replace leg solenoid.

End

Remove leg solenoid and bench test.

Is there no clicking or movement with 12 VDC?

Replace leg solenoid.

End

Remove top hose or bottom hose and operate jack.

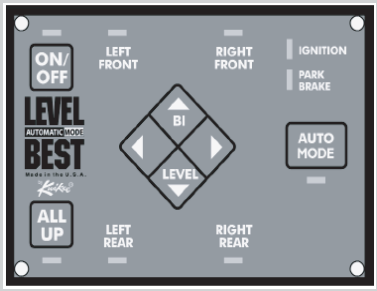
No fluid output from hose?

Check for kinked hose to jack.

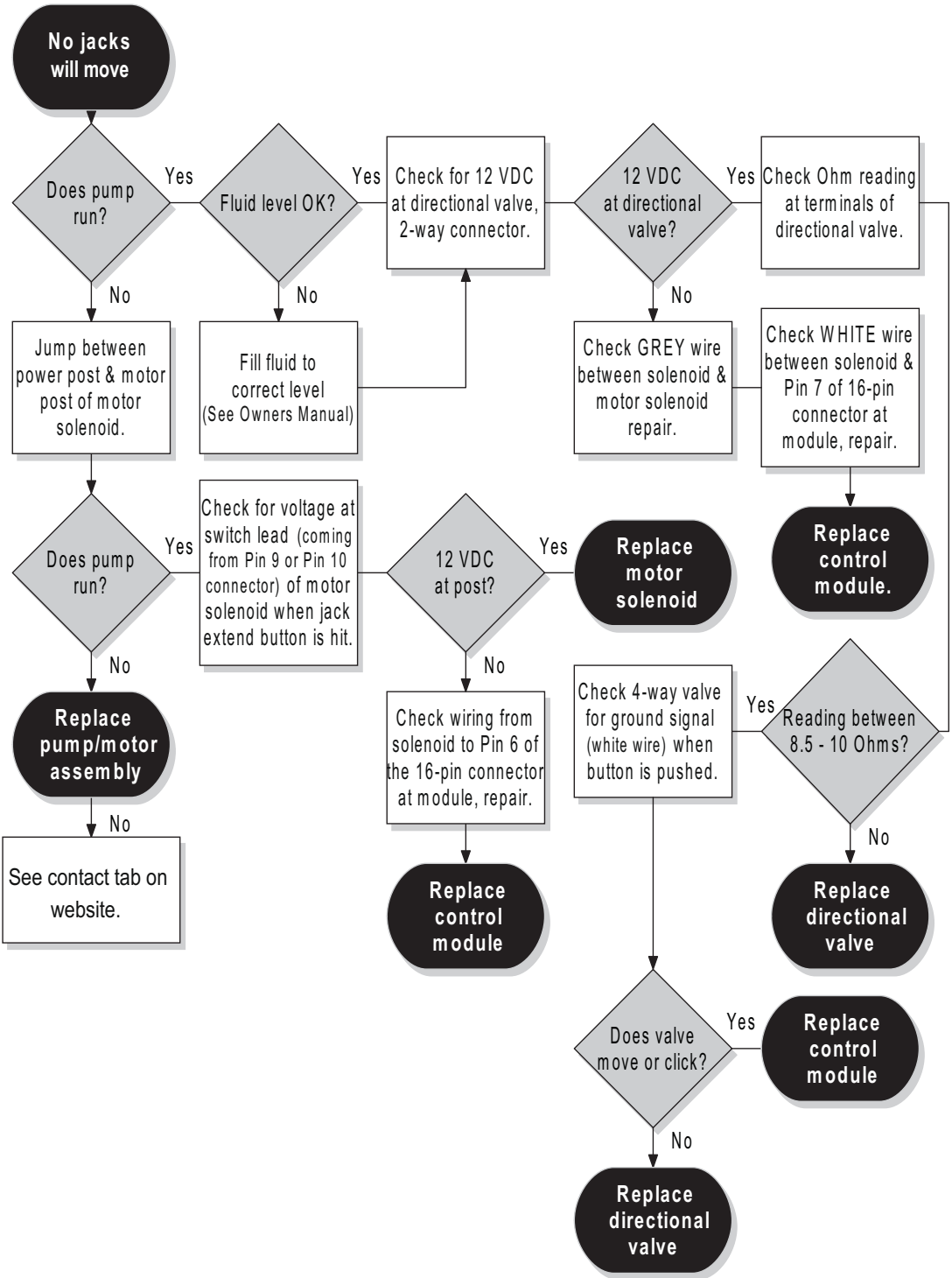
Replace control module.

See contact tab on website.

Check www.lci1.com for the latest manual & tip sheet information



Fault Code 3



Check www.lci1.com for the latest manual & tip sheet information

