



## Removal and replacement of the step motor for 9010000462, 9010000464, 9010000465, and 9010000466 Revolution Series.

© Copyright Power Gear Issued: March, 2012

#82-ST0502, Rev. 0B 7/2013

### WARNING

To prevent injury, the step must be supported with the proper automotive style jack or jack stand that is in good working order. If the step is not supported when the motor is removed, the step will open.

#### Read, understand and follow these instructions.

This procedure will need to be completed with the steps in the fully retracted position. Note: This procedure can also be completed with the steps removed from the coach.

**Step 1:** The steps will need to be braced in the completely retracted position using a standard automotive type jack or jack stand to prevent it from opening when the motor is removed from the step. **See Figure 1.** The standard automotive type jack or jack stand needs to be positioned to the rear of the steps while allowing the step frame some give for later adjustment when installing the motor. **See Figure 2.**



Figure 1



Figure 2

**Step 2:** Removing the motor. The motor is attached to the step frame using three 5/16 hex bolts. On the bottom side of the motor each bolt goes thru a plastic motor spacer. These spacers are not attached to the motor and will fall out when the bolt and/or the motor is removed. **Caution: Hold onto each of the three plastic motor spacers when the corresponding bolt is removed. See Figure 3.** Disconnect the motor harness from the motor plug. It may be necessary to use a 5/16" socket with ratchet to break the motor mounting bolts loose, completely remove the bolts. **See Figure 4.**

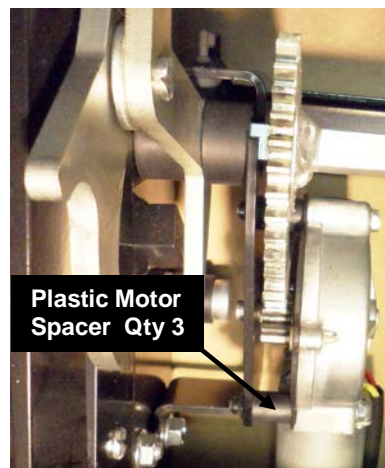


Figure 3

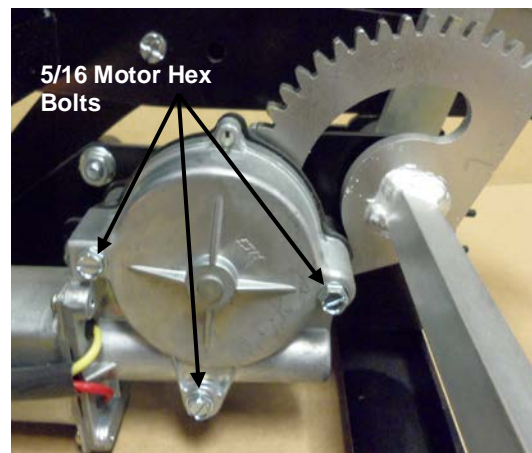


Figure 4



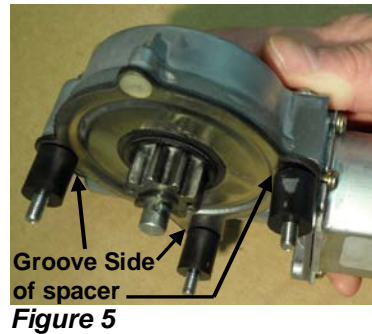


Figure 5

**Step 3:** Installing the new motor. Insert the three 5/16 hex bolts into the motor mounting holes and put one plastic motor spacer on each bolt on the backside of the motor. The spacer has a groove on one side that will need to be aligned into the motor bolt hole. The motor will have to be installed while keeping the three bolts from falling out of the mounting holes and the three plastic motor spacers from slipping off the end of each bolt. **See Figure 5.**

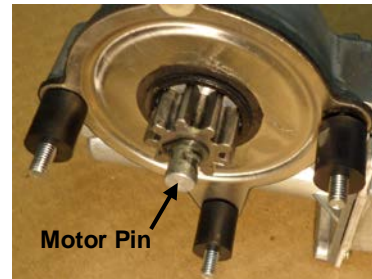


Figure 6

The motor pin (**See Figure 6**) needs to be fitted into the motor mounting bracket. The step frame may need to be adjusted to ensure the proper fit of the motor. Verify that the motor gear is properly engaged with the drive gear mechanism. **See Figure 7.**

If the motor pin and the motor mounting bolts do not line up properly, loosen (Do Not Remove) the motor mounting bracket bolts, qty of 3. **See Figure 8.** Install the motor and while holding it in place, retighten the motor mounting bracket bolts to 80 inch-lbs.

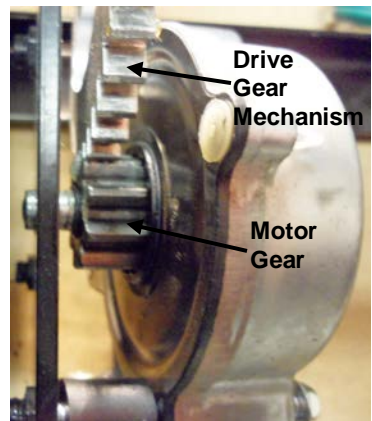


Figure 7 Motor fitted properly

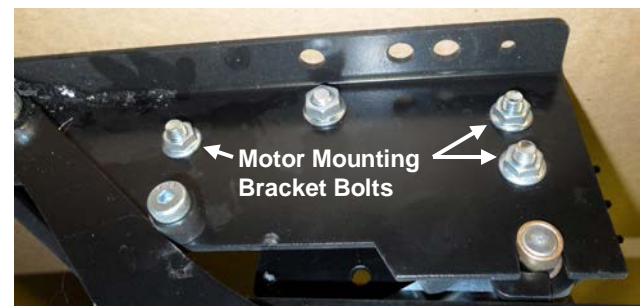


Figure 8 Side of the step

**Step 4:** With the motor fitted properly, use the 5/16 hex driver to tighten the bolts being careful not to tighten them all the way down. Using the 5/16 torque wrench, finish tightening all 3 bolts down to 18 inch pounds. **Note: Do Not Overtighten!**

Reinstall the 2 wire power motor harness to the motor, remove the jack or jack stand from the step and test the extension and retraction of the step.

Additional Reference Publications at  
[www.powergearus.com](http://www.powergearus.com)

Document #

3010002262

82-ST0500

Description:

Owners manual for Revolution Series Electric Steps with control boxes 1510000172 and 1510000140

Kwikie Step Testing Procedure